

For Research Use Only

# CoraLite® Plus 405 Anti-Mouse Ly-6G/Ly-6C (Gr-1) (RB6-8C5)



Catalog Number: **CL405-65140**

## Basic Information

Catalog Number:

CL405-65140

Size:

100ug, 0.5 mg/ml

Source:

Rat

Isotype:

IgG2b, kappa

GenBank Accession Number:

X70920

GeneID (NCBI):

546644

UNIPROT ID:

P35461

Full Name:

lymphocyte antigen 6 complex, locus G

Purification Method:

Affinity purification

CloneNo.:

RB6-8C5

Excitation/Emission maxima wavelengths:

399 nm / 422 nm

## Applications

Tested Applications:

FC

Species Specificity:

Mouse

## Background Information

Ly-6G (lymphocyte antigen 6 complex, locus G), also known as Gr-1, is a 21-25 kDa, glycosylphosphatidylinositol-anchored protein expressed on myeloid lineage cells in mouse bone marrow (PMID: 8360469). The expression of Ly-6G increases on neutrophils as they differentiate from immature cells in the bone marrow to mature cells in the blood and spleen (PMID: 8890901). Antibodies targeting Ly6G (RB6-8C5 or 1A8) are commonly used in studies aimed at identifying the role of neutrophils (PMID: 23543767). The RB6-8C5 mAb has been reported to cross-react with Ly-6C on cells expressing Ly-6C (PMID: 8360469).

## Storage

Storage:

Store at 2-8°C. Avoid exposure to light. Stable for one year after shipment.

Storage Buffer:

PBS with 0.09% sodium azide.

For technical support and original validation data for this product please contact:

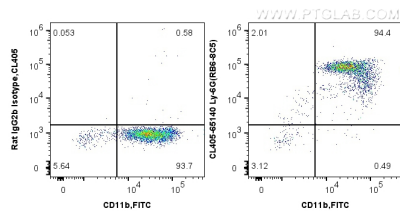
T: 4006900926

E: [Proteintech-CN@ptglab.com](mailto:Proteintech-CN@ptglab.com)

W: [ptgcn.com](http://ptgcn.com)

This product is exclusively available under Proteintech Group brand and is not available to purchase from any other manufacturer.

## Selected Validation Data



1X10<sup>6</sup> mouse bone marrow cells were surface co-stained with FITC Anti-Mouse CD11b and 0.5 ug CoraLite® Plus 405 Anti-Mouse Ly-6G/Ly-6C (Gr-1) (CL405-65140, Clone: RB6-8C5) or 0.5 ug Control Antibody. Cells were not fixed.