

For Research Use Only

CoraLite® Plus 405 Mouse IgG2b Isotype Control (MPC-11)



Catalog Number: **CL405-65128**

Basic Information

Catalog Number:

CL405-65128

Size:

100ug, 200 µg/ml

Source:

Mouse

Isotype:

IgG2b

GenBank Accession Number:

GeneID (NCBI):

16016

UNIPROT ID:

P01867

Full Name:

immunoglobulin heavy chain 3
(serum IgG2b)

Purification Method:

Affinity purification

CloneNo.:

MPC-11

Excitation/Emission maxima
wavelengths:

399 nm / 422 nm

Applications

Tested Applications:

FC

Species Specificity:

Background Information

The MPC-11 immunoglobulin is useful as an isotype-matched control. The MPC-11 immunoglobulin has an unknown binding specificity and is used as an isotype control for mouse IgG2b antibodies. This antibody has been quality-tested for flow cytometry as negative control.

Storage

Storage:

Store at 2-8°C. Avoid exposure to light. Stable for one year after shipment.

Storage Buffer:

PBS with 0.09% sodium azide and 0.5% BSA.

For technical support and original validation data for this product please contact:

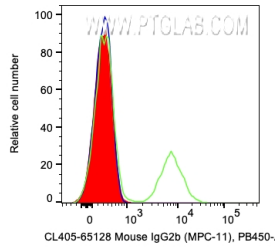
T: 4006900926

E: Proteintech-CN@ptglab.com

W: ptgcn.com

This product is exclusively available under Proteintech Group brand and is not available to purchase from any other manufacturer.

Selected Validation Data



1X10⁶ human PBMCs were surface stained with 0.2 ug CoraLite® Plus 405 Mouse IgG2b Isotype Control (CL405-65128, Clone:MPC-11) (red), CL405 Anti-Human CD20 (green), or unstained (blue). Cells were not fixed.