

For Research Use Only

# CoraLite® Plus 405 Anti-Human CD107a / LAMP1 (H4A3)



Catalog Number: CL405-65051

## Basic Information

<b>Catalog Number:</b> CL405-65051	<b>GenBank Accession Number:</b> BC006345	<b>Purification Method:</b> Protein G purification
<b>Size:</b> 100tests, 5 µl/test	<b>GeneID (NCBI):</b> 3916	<b>CloneNo.:</b> H4A3
<b>Source:</b> Mouse	<b>ENSEMBL Gene ID:</b> ENSG00000185896	<b>Excitation/Emission maxima wavelengths:</b> 399 nm / 422 nm
<b>Isotype:</b> IgG1	<b>UNIPROT ID:</b> P11279	
	<b>Full Name:</b> lysosomal-associated membrane protein 1	

## Applications

**Tested Applications:**  
FC (Intra)

**Species Specificity:**  
Human

## Background Information

LAMP1 (CD107a) is a heavily glycosylated membrane protein enriched in the lysosomal membrane. LAMP1 is extensively glycosylated with asparagine-linked oligosaccharides which protect it from intracellular proteolysis (PMID: 10521503). Although LAMP1 is expressed largely in the endosome-lysosomal membrane of cells, it is also found on the plasma membrane (PMID: 16168398). Elevated LAMP1 expression at the cell surface has also been detected during platelet and granulocytic cell activation, as well as in some tumor cells (PMID: 29085473). LAMP1 functions to provide selectins with carbohydrate ligands. This protein has also been shown to be a marker of degranulation on lymphocytes such as CD8+ and NK cells and may also play a role in tumor cell differentiation and metastasis (PMID: 18835598; 29085473; 9426697).

## Storage

**Storage:**  
Store at 2-8°C. Avoid exposure to light. Stable for one year after shipment.

**Storage Buffer:**  
PBS with 0.09% sodium azide and 0.5% BSA.

For technical support and original validation data for this product please contact:

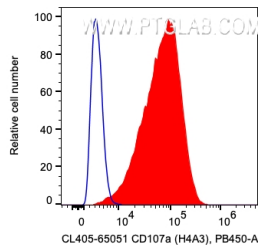
T: 4006900926

E: [Proteintech-CN@ptglab.com](mailto:Proteintech-CN@ptglab.com)

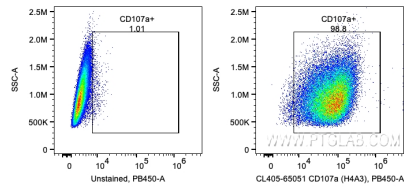
W: [ptgcn.com](http://ptgcn.com)

This product is exclusively available under Proteintech Group brand and is not available to purchase from any other manufacturer.

## Selected Validation Data



1X10<sup>6</sup> HeLa cells were intracellularly stained with 5 ul CoraLite® Plus 405 Anti-Human CD107a / LAMP1 (CL405-65051, Clone:H4A3). Cells were fixed with 4% PFA and permeabilized with Flow Cytometry Perm Buffer (PF00011-C).



1X10<sup>6</sup> HeLa cells were intracellularly stained with 5 ul CoraLite® Plus 405 Anti-Human CD107a / LAMP1 (CL405-65051, Clone:H4A3). Cells were fixed with 4% PFA and permeabilized with Flow Cytometry Perm Buffer (PF00011-C).