

For Research Use Only

# FcZero-rAb® Biotin Anti-Human L1CAM/CD171 Rabbit Recombinant Antibody

Catalog Number: Biotin-FcA98130



## Basic Information

<b>Catalog Number:</b> Biotin-FcA98130	<b>GenBank Accession Number:</b> BC126229	<b>Purification Method:</b> Protein A purification
<b>Concentration:</b> 100ug, 500 ug/ml	<b>GeneID (NCBI):</b> 3897	<b>CloneNo.:</b> 240978A7
<b>Source:</b> Rabbit	<b>UNIPROT ID:</b> P32004	<b>Recommended Dilutions:</b> FC: 0.25 ug per 10 <sup>6</sup> cells in a 100 µl suspension
<b>Isotype:</b> IgG	<b>Full Name:</b> L1 cell adhesion molecule	<b>Excitation/Emission maxima wavelengths:</b> -
<b>Immunogen Catalog Number:</b> EG0209	<b>Calculated MW:</b> 1257 aa, 140 kDa	

## Applications

<b>Tested Applications:</b> FC, ELISA	<b>Positive Controls:</b> FC : SK-N-SH cells,
<b>Species Specificity:</b> human	

## Background Information

L1CAM, also known as NCAM-L1 or CD171, is a cell adhesion molecule of the immunoglobulin superfamily. It is a 200-220 kDa transmembrane glycoprotein composed of six Ig-like domains and five fibronectin type III repeats followed by a transmembrane region and a highly conserved cytoplasmic tail (PMID: 3412448; 22796939). L1CAM is primarily expressed in the nervous system and is involved in neuron-neuron adhesion, neurite fasciculation, outgrowth of neurites, cerebellar granule cell migration, neurite outgrowth on Schwann cells and interactions among epithelial cells of intestinal crypts (PMID: 3412448; 10767310). L1CAM is overexpressed in many human cancers and is often associated with bad prognosis (PMID: 27267927; 26111503).

## Storage

**Storage:**  
Store at 2-8°C. Avoid exposure to light. Stable for one year after shipment.  
**Storage Buffer:**  
PBS with 0.09% sodium azide and 0.5% BSA, pH7.3

For technical support and original validation data for this product please contact:

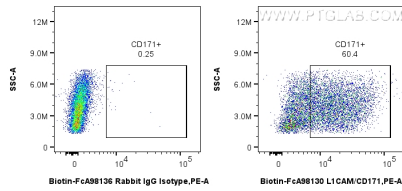
T: 4006900926

E: [Proteintech-CN@ptglab.com](mailto:Proteintech-CN@ptglab.com)

W: [ptgcn.com](http://ptgcn.com)

**This product is exclusively available under Proteintech Group brand and is not available to purchase from any other manufacturer.**

## Selected Validation Data



1x10<sup>6</sup> SK-N-SH cells were surface stained with 0.25 ug Biotin Anti-Human L1CAM/CD171 Rabbit RecAb (Biotin-FcA98130, Clone:240978A7) or 0.25 ug Isotype Control, and Streptavidin-PE Conjugate (PE-PF00030). Cells were not fixed.