

For Research Use Only

FcZero-CAR™ Biotin-EGFR CAR Detection Reagent, Human

Catalog Number: Biotin-CAR022



Basic Information

Catalog Number:

Biotin-CAR022

Concentration:

500 ug/ml

Source:

CHO cells-derived Human EGFR protein (25-645 aa) (Accession #P00533) with a mutated Human IgG1 FcZero backbone

GeneID (NCBI):

1956

UNIPROT ID:

P00533

Isotype:

Recombinant Human IgG1

Conjugation:

Site specific conjugated with Biotin

Target Cell:

EGFR-specific CAR-T cells, EGFR-specific CAR-NK cells

Recommended Dilutions:

FC: 0.25 ug per 10⁶ cells in a 100 µl suspension

Excitation/Emission Maxima

Wavelengths:

-

Applications

Tested Applications:

FC

Species Specificity:

Human

Positive Controls:

FC : Transfected HEK-293 cells,

Information

EGFR, also named as ERBB1, is a cell-surface receptor for members of the epidermal growth factor family (EGF-family) of extracellular protein ligands. Binding of the protein to a ligand induces receptor dimerization and tyrosine autophosphorylation and leads to cell proliferation. The gene resides on chromosome 7p12, encoding a 170 kDa membrane-associated glycoprotein. It has been shown that EGFR plays a critical role in cancer development and progression, including cell proliferation, apoptosis, angiogenesis, and metastatic spread. Mutations in this gene are associated with lung cancer.

Storage

Storage:

Store at 2-8°C. Avoid exposure to light. Stable for one year after shipment.

Buffer:

50mM HEPES, 150mM NaCl, 5mM EDTA, 0.1% CHAPS, 10% Sucrose and 0.1% Proclin 300, pH 7.3.

For technical support and original validation data for this product please contact:

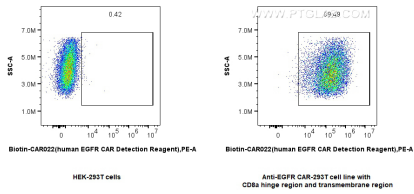
T: 4006900926

E: Proteintech-CN@ptglab.com

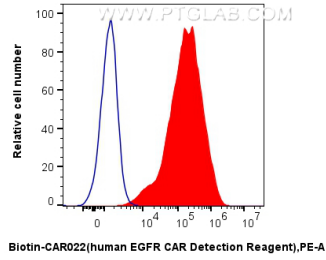
W: ptgcn.com

This product is exclusively available under Proteintech Group brand and is not available to purchase from any other manufacturer.

Selected Validation Data



1x10⁶ HEK-293 cells or anti-EGFR CAR pool with CD8a hinge region and transmembrane region transfected HEK-293 cells were surface stained with 0.25 ug FcZero-CAR™ Biotin-EGFR CAR Detection Reagent, Human (Biotin-CAR022) and Streptavidin-PE Conjugate (PE-PF00030). Cells were not fixed.



1x10⁶ HEK-293 cells (blue) or anti-EGFR CAR pool with CD8a hinge region and transmembrane region transfected HEK-293 cells (red) were surface stained with 0.25 ug FcZero-CAR™ Biotin-EGFR CAR Detection Reagent, Human (Biotin-CAR022) and Streptavidin-PE Conjugate (PE-PF00030). Cells were not fixed.