

For Research Use Only

FcZero-CAR™ Biotin-HER2/ErbB2 CAR Detection Reagent, Human

Catalog Number: Biotin-CAR020



Basic Information

| | | |
|---|---|---|
| Catalog Number: Biotin-CAR020 | GeneID (NCBI): 2064 | Target Cell: HER2/ErbB2-specific CAR-T cells, HER2/ErbB2-specific CAR-NK cells |
| Concentration: 500 ug/ml | UNIPROT ID: P04626 | Recommended Dilutions: FC: 0.25 ug per 10 ⁶ cells in a 100 µl suspension |
| Source: CHO cells-derived Human HER2/ErbB2 protein (23-652 aa) (Accession #P04626) with a mutated Human IgG1 FcZero backbone | Isotype: Recombinant Human IgG1 | Excitation/Emission Maxima Wavelengths: - |
| | Conjugation: Site specific conjugated with Biotin | |

Applications

| | |
|--------------------------------------|--|
| Tested Applications: FC | Positive Controls: FC : Transfected HEK-293 cells, |
| Species Specificity: Human | |

Information

HER2, also known as ErbB2 and Neu, is a 185-kDa transmembrane glycoprotein member of the epidermal growth factor (EGF) receptor family of receptor tyrosine kinases. It has no ligand-binding domain and therefore cannot bind growth factors. However, it does bind tightly to other ligand-bound EGF receptor family members to form a heterodimer, stabilizing ligand binding and enhancing kinase-mediated activation of downstream signaling pathways, such as those involving mitogen-activated protein kinase and phosphatidylinositol-3 kinase. Amplification and overexpression of HER2 have been reported in numerous cancers, including breast and ovarian tumors. HER2 is a therapeutic target for the treatment of breast cancer and other carcinomas.

Storage

Storage:
Store at 2-8°C. Avoid exposure to light. Stable for one year after shipment.
Buffer:
50mM HEPES, 150mM NaCl, 5mM EDTA, 0.1% CHAPS, 10% Sucrose and 0.1% Proclin 300, pH 7.3.

For technical support and original validation data for this product please contact:

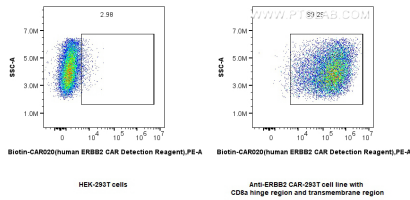
T: 4006900926

E: Proteintech-CN@ptglab.com

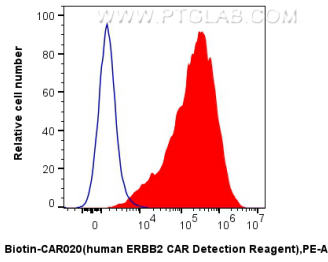
W: ptgcn.com

This product is exclusively available under Proteintech Group brand and is not available to purchase from any other manufacturer.

Selected Validation Data



1×10^6 HEK-293 cells or anti-HER2/ErbB2 CAR pool with CD8a hinge region and transmembrane region transfected HEK-293 cells were surface stained with $0.25 \mu\text{g}$ FcZero-CAR™ Biotin-HER2/ErbB2 CAR Detection Reagent, Human (Biotin-CAR020) and Streptavidin-PE Conjugate (PE-PF00030). Cells were not fixed.



1×10^6 HEK-293 cells (blue) or anti-HER2/ErbB2 CAR pool with CD8a hinge region and transmembrane region transfected HEK-293 cells (red) were surface stained with $0.25 \mu\text{g}$ FcZero-CAR™ Biotin-HER2/ErbB2 CAR Detection Reagent, Human (Biotin-CAR020) and Streptavidin-PE Conjugate (PE-PF00030). Cells were not fixed.