

For Research Use Only



# Biotin Anti-Human Glycophorin A/CD235a Rabbit Recombinant Antibody

Catalog Number: **Biotin-98370-2**

## Basic Information

<b>Catalog Number:</b> Biotin-98370-2	<b>GenBank Accession Number:</b> BC005319	<b>Purification Method:</b> Protein A purification
<b>Concentration:</b> 100ug, 500 ug/ml	<b>GeneID (NCBI):</b> 2993	<b>CloneNo.:</b> 242822E1
<b>Source:</b> Rabbit	<b>UNIPROT ID:</b> P02724	<b>Recommended Dilutions:</b> FC: 0.25 ug per 10 <sup>6</sup> cells in a 100 µl suspension
<b>Isotype:</b> IgG	<b>Full Name:</b> glycophorin A (MNS blood group)	
<b>Immunogen Catalog Number:</b> EG2336	<b>Calculated MW:</b> 150 aa, 16 kDa	

## Applications

<b>Tested Applications:</b> FC, ELISA	<b>Positive Controls:</b> FC : Human peripheral blood erythrocytes,
<b>Species Specificity:</b> human	

## Background Information

Glycophorin A (GYPA) is the major transmembrane sialoglycoprotein in erythrocytes. It is a dimeric type I transmembrane protein carrying 15 closely clustered O-linked tetrasaccharides capped with sialic acid/N-acetylneuraminic acid (Neu5Ac). This 36 kDa protein represents the major sialoglycoprotein of the red blood cell membrane displaying about one million copies per cell. (PMID: 9490702)

## Storage

**Storage:**  
Store at 2-8°C. Avoid exposure to light. Stable for one year after shipment.  
**Storage Buffer:**  
PBS with 0.09% sodium azide, pH7.3

For technical support and original validation data for this product please contact:

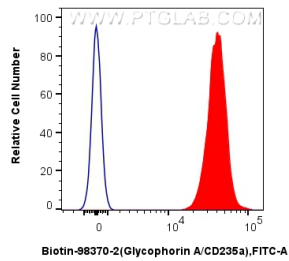
T: 4006900926

E: [Proteintech-CN@ptglab.com](mailto:Proteintech-CN@ptglab.com)

W: [ptgcn.com](http://ptgcn.com)

This product is exclusively available under Proteintech Group brand and is not available to purchase from any other manufacturer.

## Selected Validation Data



$1 \times 10^6$  Human peripheral blood erythrocytes were surface stained with 5  $\mu$ l Biotin Anti-Human Glycophorin A/CD235a Rabbit RecAb (Biotin-98370-2, Clone: 242822E1) and CoraLite®488-conjugated streptavidin (red), or unstained (blue). Cells were not fixed.