

For Research Use Only

# Biotin Anti-Human CD16a Rabbit Recombinant Antibody

Catalog Number: Biotin-98293



## Basic Information

Catalog Number:

Biotin-98293

Concentration:

100ug, 500 ug/ml

Source:

Rabbit

Isotype:

IgG

Immunogen Catalog Number:

EG2488

GenBank Accession Number:

GeneID (NCBI):

2214

ENSEMBL Gene ID:

ENSG00000203747

Full Name:

Fc fragment of IgG, low affinity IIIa, receptor (CD16a)

Purification Method:

Protein A purification

CloneNo.:

242426G11

Recommended Dilutions:

FC: 0.25 ug per 10<sup>6</sup> cells in a 100 µl suspension

Excitation/Emission maxima wavelengths:

-

## Applications

Tested Applications:

FC

Species Specificity:

human

Positive Controls:

FC : human PBMCs,

## Background Information

CD16 is a 50-70-kDa low affinity Fc receptor found on the surface of natural killer cells, neutrophil polymorphonuclear leukocytes, monocytes and macrophages. CD16 mediates antibody-dependent cellular cytotoxicity (ADCC) and other antibody-dependent responses, such as phagocytosis. CD16 has been identified as Fc receptors Fc  $\gamma$  RIIIa (CD16a) and Fc  $\gamma$  RIIIb (CD16b), encoded by two nearly identical genes, FCGR3A and FCGR3B.

## Storage

Storage:

Store at 2-8°C. Avoid exposure to light. Stable for one year after shipment.

Storage Buffer:

PBS with 0.09% sodium azide and 0.5% BSA, pH7.3

For technical support and original validation data for this product please contact:

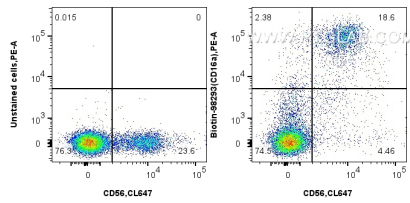
T: 4006900926

E: [Proteintech-CN@ptglab.com](mailto:Proteintech-CN@ptglab.com)

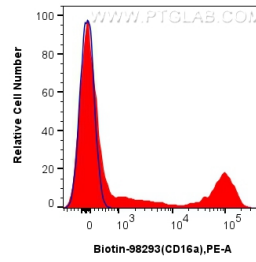
W: [ptgcn.com](http://ptgcn.com)

This product is exclusively available under Proteintech Group brand and is not available to purchase from any other manufacturer.

## Selected Validation Data



1x10<sup>6</sup> human PBMCs were surface stained with 0.25 ug Biotin Anti-Human CD16a Rabbit RecAb (Biotin-98293, Clone: 242426G11) and PE-conjugated streptavidin, or unstained (blue). Cells were co-stained with CoraLite® Plus 647 Anti-Human NCAM1/CD56 (B-A19) (CL647-65264, Clone: B-A19). Cells were incubated with FC Receptor Block prior to staining. Cells were not fixed.



1x10<sup>6</sup> human PBMCs were surface stained with 0.25 ug Biotin Anti-Human CD16a Rabbit RecAb (Biotin-98293, Clone: 242426G11) and PE-conjugated streptavidin (red), or unstained (blue). Cells were incubated with FC Receptor Block prior to staining. Cells were not fixed.