

For Research Use Only

# Biotin Rabbit IgG Isotype Control Recombinant Antibody

Catalog Number: Biotin-98136



## Basic Information

Catalog Number:

Biotin-98136

GenBank Accession Number:

GeneID (NCBI):

Purification Method:

Protein A purification

Concentration:

100ug, 500 ug/ml

Full Name:

CloneNo.:

240953C9

Source:

Rabbit

Recommended Dilutions:

FC: 0.25 ug per 10<sup>6</sup> cells in a 100 µl suspension

Isotype:

IgG

Excitation/Emission maxima wavelengths:

-

## Applications

Tested Applications:

FC, ELISA

Positive Controls:

FC : human PBMCs,

Species Specificity:

n/a

## Background Information

This product is an isotype control antibody, which is used to estimate the non-specific binding of target primary antibodies due to Fc receptor binding or other protein-protein interactions. An isotype control antibody should have the same immunoglobulin type and be used at the same concentration as the test antibody.

## Storage

Storage:

Store at 2-8°C. Avoid exposure to light. Stable for one year after shipment.

Storage Buffer:

PBS with 0.09% sodium azide, pH7.3

For technical support and original validation data for this product please contact:

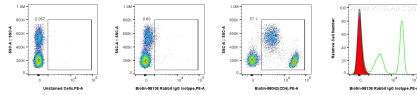
T: 4006900926

E: [Proteintech-CN@ptglab.com](mailto:Proteintech-CN@ptglab.com)

W: [ptgcn.com](http://ptgcn.com)

This product is exclusively available under Proteintech Group brand and is not available to purchase from any other manufacturer.

## Selected Validation Data



1x10<sup>6</sup> human PBMCs were unstained (blue in histogram), or surface stained with 0.25 ug Biotin Rabbit IgG Isotype Control RecAb (Biotin-98136, Clone: 240953C9) (red in histogram) or 0.25 ug Biotin Anti-Human CD4 Rabbit Recombinant Antibody (Biotin-98042, Clone: 240427E12) (green in histogram), and Streptavidin-PE Conjugate (PE-PF00030). Cells were incubated with FC Receptor Block prior to staining. Cells were not fixed.