

Biotin-conjugated IgG lambda chain Monoclonal antibody

Catalog Number: **Biotin-67762**

Basic Information

Catalog Number:

Biotin-67762

Size:

1000 µg/ml

Source:

Mouse

Isotype:

IgG2a

Immunogen Catalog Number:

AG14783

GenBank Accession Number:

BC007782

GeneID (NCBI):

3537

Full Name:

immunoglobulin lambda constant 1
(Mcg marker)

Calculated MW:

233 aa, 25 kDa

Observed MW:

~25 kDa

Purification Method:

Protein A purification

CloneNo.:

1D12B5

Recommended Dilutions:

IHC 1:50-1:500

Applications

Tested Applications:

IHC

Species Specificity:

Human

Note-IHC: suggested antigen retrieval with **TE buffer pH 9.0; (*)** Alternatively, antigen retrieval may be performed with **citrate buffer pH 6.0**

Positive Controls:

IHC : human tonsillitis tissue,

Background Information

This antibody detects Lambda chain of human IgG.

Storage

Storage:

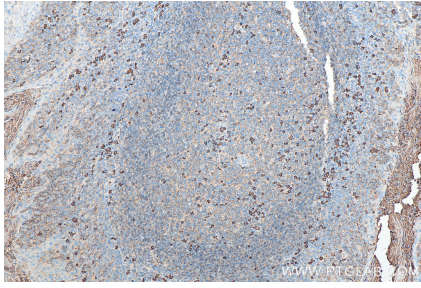
Store at -20°C. Avoid exposure to light.

Storage Buffer:

PBS with 50% Glycerol, 0.05% Proclin300, 0.5% BSA, pH 7.3.

Aliquoting is unnecessary for -20°C storage

Selected Validation Data



Immunohistochemical analysis of paraffin-embedded human tonsillitis tissue slide using Biotin-67762 (Human IgG lambda chain antibody) at dilution of 1:200 (under 10x lens). Heat mediated antigen retrieval with Tris-EDTA buffer (pH 9.0).