

For Research Use Only

Biotin-conjugated IgG Lambda Light Chain Polyclonal antibody



Catalog Number: Biotin-20758

Basic Information

Catalog Number: Biotin-20758	GenBank Accession Number: BC007782	Purification Method: Antigen affinity purification
Size: 1000 µg/ml	GeneID (NCBI): 3537	Recommended Dilutions: IHC 1:50-1:500
Source: Rabbit	Full Name: immunoglobulin lambda constant 1 (Mcg marker)	
Isotype: IgG	Calculated MW: 233 aa, 25 kDa	
Immunogen Catalog Number: AG14693	Observed MW: 25 kDa	

Applications

Tested Applications: IHC	Positive Controls: IHC : human tonsillitis tissue,
Species Specificity: human	
Note-IHC: suggested antigen retrieval with TE buffer pH 9.0; (*) Alternatively, antigen retrieval may be performed with citrate buffer pH 6.0	

Background Information

This antibody detects the lambda light chain of human IgG.

Storage

Storage:
Store at -20°C. Avoid exposure to light.
Storage Buffer:
PBS with 50% Glycerol, 0.05% Proclin300, 0.5% BSA, pH 7.3.
Aliquoting is unnecessary for -20°C storage

For technical support and original validation data for this product please contact:

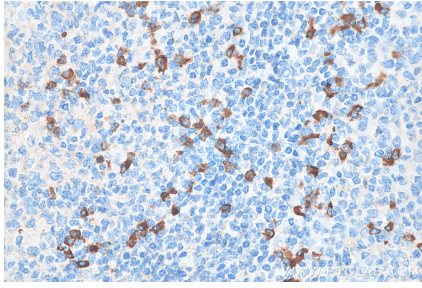
T: 4006900926

E: Proteintech-CN@ptglab.com

W: ptgcn.com

This product is exclusively available under Proteintech Group brand and is not available to purchase from any other manufacturer.

Selected Validation Data



Immunohistochemical analysis of paraffin-embedded human tonsillitis tissue slide using Biotin-20758 (IgG Lambda Light Chain antibody) at dilution of 1:200 (under 40x lens). Heat mediated antigen retrieval with Tris-EDTA buffer (pH 9.0).