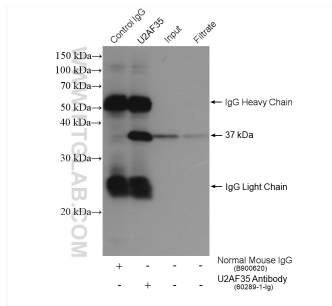


---

<b>Physical State</b>	Liquid
<b>Purification</b>	1 mg/ml. The antibody was purified from mouse whole serum by protein A chromatography.
<b>Size</b>	100ug
<b>保存条件</b>	-20°C, avoid repeated thawing and freezing
<b>Host</b>	Female Balb/C mice
<b>Note</b>	This product is for research use only, not for diagnostic or therapeutic use.
<b>Buffer</b>	PBS, 50% glycerol, pH 7.3
<b>Preservative</b>	0.02% Sodium Azide
<b>Applications</b>	ELISA, IP, CHIP
<b>Background</b>	This product is normal mouse IgG, purified from non-immunized mouse serum with protein A resin. Normal mouse IgG could be used as counterpart control of mouse primary antibody to estimate the non-specific binding of target primary antibodies due to Fc receptor binding or other protein-protein interactions. An isotype control antibody should have the same immunoglobulin type and be used at the same concentration as the test antibody.

## Validation Data



IP sample detected with different secondary antibodies. Normal Mouse IgG (B900620) as control.

For technical support and original validation data for this product please contact

T: 027-87531629

E: [Proteintech-CN@ptglab.com](mailto:Proteintech-CN@ptglab.com)

W: [ptgcn.com](http://ptgcn.com)

This product is exclusively available under Proteintech Group brand and is not available to purchase from any other manufacturer.