

For Research Use Only

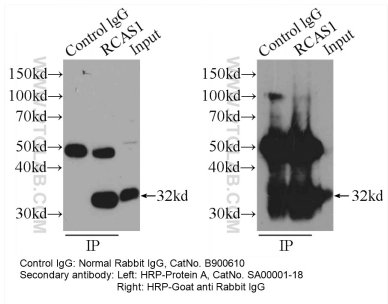
# Rabbit IgG

Catalog Number: B900610

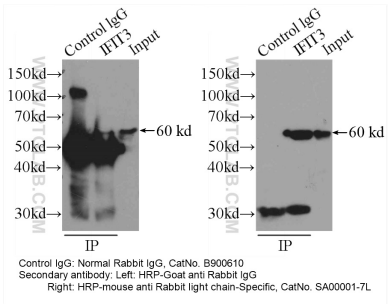
---

Physical State	Liquid
Protein Concentration	1 mg/ml
Size	1mg
Purification	The antibody was purified from rabbit whole serum by immunoaffinity chromatography.
Applications	ELISA, IP, CHIP
Note	This product is for research use only, not for diagnostic or therapeutic use.
Buffer	PBS, 50% glycerol, pH 7.3
Preservative	0.02% Sodium Azide
Storage	-20°C, avoid repeated thawing and freezing
Background	This product is Normal rabbit IgG (without immunized) which purified with Protein A. Normal Rabbit IgG is an isotype control antibody, which is used to estimate the non-specific binding of target primary antibodies due to Fc receptor binding or other protein-protein interactions. An isotype control antibody should have the same immunoglobulin type and be used at the same concentration as the test antibody.

Validation Data



IP sample detected with different secondary antibodies. Normal Rabbit IgG (B900610) as control.



IP sample detected with different secondary antibodies. Normal Rabbit IgG (B900610) as control.