

FOR IN VITRO RESEARCH USE ONLY.  
NOT FOR USE IN HUMANS OR ANIMALS.

# CDH16 Fusion Protein

## Basic Information

**Catalog Number:**  
Ag4343

**Size:**  
50 µg

**Form:**  
Available lyophilized

**Species:**  
human

**Expression Source:**  
*e coli*-derived, T-HIS, with N-terminal 6<sup>o</sup>His.

**Biological Activity:**  
Not tested

**Endotoxin Level:**  
Please contact the lab for more information

**Validated Application:**  
Blocking peptide

**Peptide Sequence:**  
AQP AELSV E V P E N Y G G N F P L Y L T K L P L P R E G A E G Q I V L  
S G D S G K A T E G P F A M D P D S G F L L V T R A L D R E E Q A E Y Q L  
Q V T L E M Q D G H V L W G P Q P V L V H V K D E N D Q V P H F S Q  
A I Y R A R L S R G T R P G I P F L F L E A S D R D E P G T A N S D L R F H I  
L S Q A P A Q P S P D M F Q L E P R L G A L A L S P K G S T S L D H A L E  
R T Y Q L L V Q V K D M G D Q A S G H Q A T A T V E V S I I E S T W V S  
L E P I H L A E N L K V L Y P H H M A Q V H W S G G D V H Y H L E S H P  
P G P F E V N A E G N L Y V T R E L D R E A Q A E Y L L Q V R A Q N S H  
G E D Y A A P L E H L V L V M D E N D N V P I C P P R D P T V S I P E L S P  
(20-350 aa encoded by BC027912)

## Reconstitution and Storage

**Reconstitution:**  
Reconstitute at 0.25 µg/ µl in 200 µl sterile water for short-term storage.  
After reconstitution with sterile water, if glycerol has no effect on subsequent experiments, it is recommended to add an equal volume of glycerol for long-term storage (see Stability and Storage for more details).  
If a different concentration is needed for your purposes please adjust the reconstitution volume as required (please note: the ion concentration of the final solution will vary according to the volume used).  
Note: Centrifuge vial before opening. When reconstituting, gently pipet and wash down the sides of the vial to ensure full recovery of the protein into solution.

**Shipping:**  
The product is shipped at ambient temperature. Upon receipt, store it immediately at the recommended temperature (see below).

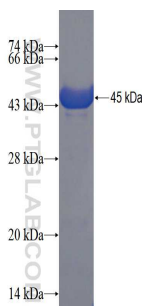
## Stability and Storage

Store for up to 12 months at -20°C to -80°C as lyophilized powder.

## Storage of Reconstituted Protein

**Short Term Storage:**  
Store at 2-8°C for (1-2 weeks).  
**Long Term Storage:**  
Aliquot and store at -20°C to -80°C for up to 3 months, reconstitution with sterile water and addition of an equal volume of glycerol. Avoid repeat freeze-thaw cycles.

## Selected Validation Data



For technical support and original validation data for this product please contact:  
T: 4006900926 E: [Proteintech-CN@ptglab.com](mailto:Proteintech-CN@ptglab.com) W: [ptgcn.com](http://ptgcn.com)

This product is exclusively available under Proteintech Group brand and is not available to purchase from any other manufacturer.