

FOR IN VITRO RESEARCH USE ONLY.
NOT FOR USE IN HUMANS OR ANIMALS.

Musashi-2 Fusion Protein

Basic Information

Catalog Number:

Ag23426

Size:

50 µg

Form:

Available lyophilized

Species:

human

Expression Source:

e. coli-derived, PET28a, with N-terminal 6⁺His.

Biological Activity:

Not tested

Endotoxin Level:

Please contact the lab for more information

Validated Application:

Blocking peptide

Peptide Sequence:

MEANGSQGTSGSANDSQHDPGKMFIGGLSWQTSPP
SLRDYFSKFGEIRECMVMRDPTTKRSRGFGFVTFADP
ASVDKVLGQPHHELDSKTIIDPKVAFPRRAQPKMVTRT
KKIFVGGLSANTVVEDVKQYFEQFGKVEDAMLDFDK
TTNRHRGFGFVTFENEDVVEKVCIEIHFHEINNKMVEC
KKAQPKVEMFPPGTRGRARGLPYTMDAFMLGMGMLG
YPNFVATYGRGYPGFAPSYGYQFPFGFPAAYGPVAA
AAVAAAARGSGSNPARPGFPGANSPGPVADLYGPAS
QDSGVGNYISAASPQPGSGFGHGIAGPLIATAFTNGY
H

(1-328 aa encoded by BC001526)

Reconstitution and Storage

Reconstitution:

Reconstitute at 0.25 µg/ µl in 200 µl sterile water for short-term storage.

After reconstitution with sterile water, if glycerol has no effect on subsequent experiments, it is recommended to add an equal volume of glycerol for long-term storage (see Stability and Storage for more details).

If a different concentration is needed for your purposes please adjust the reconstitution volume as required (please note: the ion concentration of the final solution will vary according to the volume used).

Note: Centrifuge vial before opening. When reconstituting, gently pipet and wash down the sides of the vial to ensure full recovery of the protein into solution.

Shipping:

The product is shipped at ambient temperature. Upon receipt, store it immediately at the recommended temperature (see below).

Stability and Storage

Store for up to 12 months at -20°C to -80°C as lyophilized powder.

Storage of Reconstituted Protein

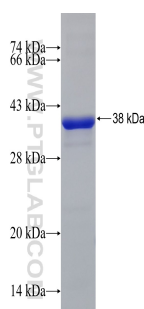
Short Term Storage:

Store at 2-8°C for (1-2 weeks).

Long Term Storage:

Aliquot and store at -20°C to -80°C for up to 3 months, reconstitution with sterile water and addition of an equal volume of glycerol. Avoid repeat freeze-thaw cycles.

Selected Validation Data



For technical support and original validation data for this product please contact:

T: 4006900926

E: Proteintech-CN@ptglab.com

W: ptgcn.com

This product is exclusively available under Proteintech Group brand and is not available to purchase from any other manufacturer.