

FOR IN VITRO RESEARCH USE ONLY.
NOT FOR USE IN HUMANS OR ANIMALS.

Recombinant human SPOPL protein



Basic Information

Catalog Number:

Ag11974

Size:

50 μ g

Form:

Available lyophilized

Species:

human

Expression Source:

e coli-derived, PET28a, with N-terminal 6*His.

Biological Activity:

Not tested

Endotoxin Level:

Please contact the lab for more information

Peptide Sequence:

MSREPTPLPGDMSTGPIAESWCYTQVKVVKFSYMW
TINNFSFCREEMGEVLKSTFSSGSPDKMKWCLRVNP
KGLDDESKDYLSLYLLVSCPKEVRAKFKFSLNAKRE
ETKAMESQRAYRFVQGDWGFKKFIRRDFLLEANG
LPDDKLTLCFVSVVQDSVNISGHTNTNTLKVPECRL
AEDLGNLWENTRFTDCSFFVRGQEFKAHKSVAARS
PVFNAMFEHEMESKKNRVEINDLDPEVFKEMMRFIY
TGRAPNLDMADNLLAAADKYALERLKMCEALCSN
LSVENVADTLVLADLHSAEQLKAQIDFINRCSVLRLQ
LGCKDGGKNWNSNQATDIMETSGWKSMIQSHPLVA
EAFRALASAQCPQFGIPRKLKQS
(1-392aa encoded by BC071613)

Reconstitution and Storage

Reconstitution:

Reconstitute at 0.25 μ g/ μ l in 200 μ l sterile water for short-term storage.

After reconstitution with sterile water, if glycerol has no effect on subsequent experiments, it is recommended to add an equal volume of glycerol for long-term storage (see Stability and Storage for more details).

If a different concentration is needed for your purposes please adjust the reconstitution volume as required (please note: the ion concentration of the final solution will vary according to the volume used).

Note: Centrifuge vial before opening. When reconstituting, gently pipet and wash down the sides of the vial to ensure full recovery of the protein into solution.

Shipping:

The product is shipped with ice packs. Upon receipt, store it immediately at -20°C to -80°C.

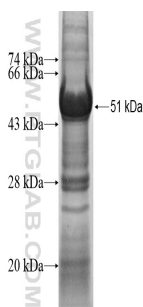
Formulation

The protein was expressed as 6xHis-tagged fusion protein by E.Coli and purified by Ni-sepharose. The purified protein was resolved in PBS (58mM Na₂HPO₄, 17mM NaH₂PO₄, 68mM NaCl, pH7.4) added with 15% glycerol. The elution buffer contain 300mM imidazole.

Stability and Storage

Aliquot and store at -20°C to -80°C for up to 6 months. Avoid freeze thaw cycles.

Selected Validation Data



For technical support and original validation data for this product please contact:

T: 4006900926

E: Proteintech-CN@ptglab.com

W: ptgcn.com

This product is exclusively available under Proteintech Group brand and is not available to purchase from any other manufacturer.