

FOR IN VITRO RESEARCH USE ONLY.  
NOT FOR USE IN HUMANS OR ANIMALS.

# METTL2B Fusion Protein

## Basic Information

**Catalog Number:**

Ag10410

**Form:**

Available lyophilized

**Species:**

human

**Expression Source:**

*e coli*-derived, PGEX-4T, with N-terminal GST.

**Biological Activity:**

Not tested

**Endotoxin Level:**

Please contact the lab for more information

**Validated Application:**

Blocking peptide

**Peptide Sequence:**

MPVDYEI NAHKYWNDFYKI HENGF FFKDRHWLFTEFPE  
LAPSQNQNHKDWFL ENKSEVCECRNEDGPGGLIME  
EQHKCSSKSLEHKTQTPPVEENV TQKISDLEI CADEF P  
GSSATYRILEVGC GVGNTVFPILQT NNDPGLFVYCCD  
FSSTAIELVQTNSEYDPSRCFAFVHDLCD EEKSYVPVK  
GSLDIII LIFVLSAIVPDKMQKAINRLSRL LKPGGMVLLR  
DYGRYDMAQLRFKKGQCLSGNFYVRGDGTRVYFF TQ  
EELDTLFTTAGLEKVQNLVDRRLQVNRGKQLTMYRV  
WIQCCKYCKPLLSSTS  
(1-313 aa encoded by BC107586)

## Reconstitution and Storage

**Reconstitution:**

Reconstitute at 0.25 µg/ µl in 200 µl sterile water for short-term storage.

After reconstitution with sterile water, if glycerol has no effect on subsequent experiments, it is recommended to add an equal volume of glycerol for long-term storage (see Stability and Storage for more details).

If a different concentration is needed for your purposes please adjust the reconstitution volume as required (please note: the ion concentration of the final solution will vary according to the volume used).

Note: Centrifuge vial before opening. When reconstituting, gently pipet and wash down the sides of the vial to ensure full recovery of the protein into solution.

**Shipping:**

The product is shipped at ambient temperature.

Upon receipt, store it immediately at the recommended temperature (see below).

## Stability and Storage

Store for up to 12 months at -20°C to -80°C as lyophilized powder.

## Storage of Reconstituted Protein

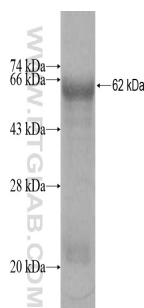
**Short Term Storage:**

Store at 2-8°C for (1-2 weeks).

**Long Term Storage:**

Aliquot and store at -20°C to -80°C for up to 3 months, reconstitution with sterile water and addition of an equal volume of glycerol. Avoid repeat freeze-thaw cycles.

## Selected Validation Data



For technical support and original validation data for this product please contact:

T: 4006900926

E: Proteintech-CN@ptglab.com

W: ptgcn.com

This product is exclusively available under Proteintech Group brand and is not available to purchase from any other manufacturer.