

For Research Use Only

FcZero-rAb™ APC Anti-Human L1CAM/CD171 Rabbit Recombinant Antibody

Catalog Number: APC-FcA98130



Basic Information

Catalog Number:

APC-FcA98130

Concentration:

100 tests, 5 µl/test

Source:

Rabbit

Isotype:

IgG

Immunogen Catalog Number:

EG0209

GenBank Accession Number:

BC126229

GeneID (NCBI):

3897

Full Name:

L1 cell adhesion molecule

Calculated MW:

1257 aa, 140 kDa

Purification Method:

Protein A purification

CloneNo.:

240978A7

Excitation/Emission maxima wavelengths:

650 nm / 660 nm

Applications

Tested Applications:

FC

Species Specificity:

human

Background Information

L1CAM, also known as NCAM-L1 or CD171, is a cell adhesion molecule of the immunoglobulin superfamily. It is a 200-220 kDa transmembrane glycoprotein composed of six Ig-like domains and five fibronectin type III repeats followed by a transmembrane region and a highly conserved cytoplasmic tail (PMID: 3412448; 22796939). L1CAM is primarily expressed in the nervous system and is involved in neuron-neuron adhesion, neurite fasciculation, outgrowth of neurites, cerebellar granule cell migration, neurite outgrowth on Schwann cells and interactions among epithelial cells of intestinal crypts (PMID: 3412448; 10767310). L1CAM is overexpressed in many human cancers and is often associated with bad prognosis (PMID: 27267927; 26111503).

Storage

Storage:

Store at 2-8°C. Avoid exposure to light. Stable for one year after shipment.

Storage Buffer:

PBS with 0.09% sodium azide and 0.5% BSA, pH7.3

For technical support and original validation data for this product please contact:

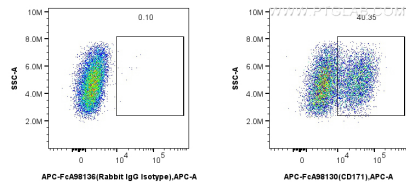
T: 4006900926

E: Proteintech-CN@ptglab.com

W: ptgcn.com

This product is exclusively available under Proteintech Group brand and is not available to purchase from any other manufacturer.

Selected Validation Data



1x10⁶ SK-N-SH cells were surface stained with 5 ul APC Anti-Human L1CAM/CD171 Rabbit RecAb (APC-FcA98130, Clone:240978A7) or APC Rabbit IgG Isotype Control RecAb (APC-FcA98136, Clone: 240953C9). Cells were not fixed.