

For Research Use Only

# APC Mouse IgG1, $\kappa$ Isotype Control Recombinant Antibody

Catalog Number: APC-98742



## Basic Information

Catalog Number:

APC-98742

Concentration:

100ug, 200 ug/ml

Source:

Mouse

Isotype:

IgG1

GenBank Accession Number:

GeneID (NCBI):

Full Name:

Purification Method:

Protein A purification

CloneNo.:

253504A1

Recommended Dilutions:

FC: 0.1 ug per  $10^6$  cells in a 100  $\mu$ l suspension

Excitation/Emission maxima wavelengths:

650 nm / 660 nm

## Applications

Tested Applications:

FC

Species Specificity:

n/a

Positive Controls:

FC : human PBMCs, rat splenocytes

## Background Information

This product is an isotype control antibody, which is used to estimate the non-specific binding of target primary antibodies due to Fc receptor binding or other protein-protein interactions. An isotype control antibody should have the same immunoglobulin type and be used at the same concentration as the test antibody.

## Storage

Storage:

Store at 2-8°C. Avoid exposure to light. Stable for one year after shipment.

Storage Buffer:

PBS with 0.09% sodium azide and 0.5% BSA, pH7.3

For technical support and original validation data for this product please contact:

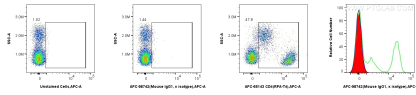
T: 4006900926

E: [Proteintech-CN@ptglab.com](mailto:Proteintech-CN@ptglab.com)

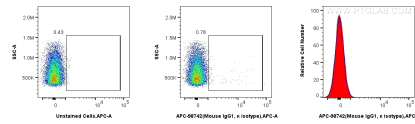
W: [ptgcn.com](http://ptgcn.com)

**This product is exclusively available under Proteintech Group brand and is not available to purchase from any other manufacturer.**

## Selected Validation Data



$1 \times 10^6$  human PBMCs were surface stained with 0.1  $\mu$ g APC Mouse IgG1,  $\kappa$  Isotype Control RecAb (APC-98742, Clone: 253504A1) (red in histogram), or 0.1  $\mu$ g APC Anti-Human CD4 (RPA-T4) (APC-65143, Clone: RPA-T4) (green in histogram), or unstained (blue in histogram). Cells were incubated with FC Receptor Block prior to staining. Cells were not fixed.



$1 \times 10^6$  rat splenocytes were surface stained with 0.1  $\mu$ g APC Mouse IgG1,  $\kappa$  Isotype Control RecAb (APC-98742, Clone: 253504A1) (red in histogram) or unstained (blue in histogram). Cells were incubated with FC Receptor Block prior to staining. Cells were not fixed.