

For Research Use Only

APC Anti-Mouse CD4 (GK1.5) Rat IgG2a Recombinant Antibody

Catalog Number: APC-65662



Basic Information

Catalog Number:

APC-65662

Concentration:

100ug, 200 ug/ml

Source:

Rat

Isotype:

IgG2a

GenBank Accession Number:

BC039137

GeneID (NCBI):

12504

Full Name:

CD4 antigen

Purification Method:

Protein G purification

CloneNo.:

GK1.5

Recommended Dilutions:

FC: 0.1 ug per 10⁶ cells in a 100 µl suspension

Excitation/Emission maxima wavelengths:

650 nm / 660 nm

Applications

Tested Applications:

FC

Species Specificity:

mouse

Positive Controls:

FC : mouse splenocytes,

Background Information

CD4 is a 55-kDa transmembrane glycoprotein expressed on T helper cells, majority of thymocytes, monocytes, macrophages, and dendritic cells (PMID: 9304802; 12213222). CD4 is an accessory protein for MHC class-II antigen/T-cell receptor interaction. It plays an important role in T helper cell development and activation (PMID: 9539765; 3112582). CD4 serves as a receptor for the human immunodeficiency virus (HIV) (PMID: 9304802).

Storage

Storage:

Store at 2-8°C. Avoid exposure to light. Stable for one year after shipment.

Storage Buffer:

PBS with 0.09% sodium azide and 0.5% BSA, pH7.3

For technical support and original validation data for this product please contact:

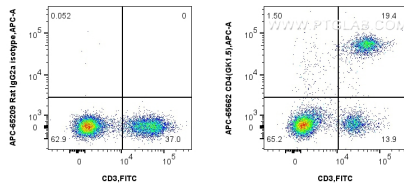
T: 4006900926

E: Proteintech-CN@ptglab.com

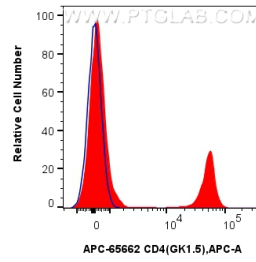
W: ptgcn.com

This product is exclusively available under Proteintech Group brand and is not available to purchase from any other manufacturer.

Selected Validation Data



1x10⁶ mouse splenocytes were surface stained with FITC Plus Anti-Mouse CD3, and 0.1 ug APC Anti-Mouse CD4 (GK1.5) Rat IgG2a RecAb (APC-65662, Clone: GK1.5) or APC Rat IgG2a Isotype Control (2A3) (APC-65209, Clone: 2A3). Cells were not fixed.



1x10⁶ mouse splenocytes were surface stained with 0.1 ug APC Anti-Mouse CD4 (GK1.5) Rat IgG2a RecAb (APC-65662, Clone: GK1.5) (red) or APC Rat IgG2a Isotype Control (2A3) (APC-65209, Clone: 2A3)(blue). Cells were not fixed.