

For Research Use Only

# APC Anti-Human CD14 (26IC)

Catalog Number: APC-65246



## Basic Information

Catalog Number:

APC-65246

Concentration:

100 tests, 5 µl/test

Source:

Mouse

Isotype:

IgG2b

GenBank Accession Number:

BC010507

GeneID (NCBI):

929

ENSEMBL Gene ID:

ENSG00000170458

UNIPROT ID:

P08571

Full Name:

CD14 molecule

Calculated MW:

375 aa, 40 kDa

Purification Method:

Affinity purification

CloneNo.:

26IC

Excitation/Emission maxima

wavelengths:

650 nm / 660 nm

## Applications

Tested Applications:

FC

Species Specificity:

human

## Background Information

CD14 is a 50-55 kDa glycosylphosphatidylinositol-anchored glycoprotein preferentially expressed on monocytes and macrophages, and at lower levels on granulocytes (PMID: 3385210; 2462937; 7685797). CD14 can also exist as a soluble protein. CD14 acts as a co-receptor for bacterial liposaccharides (LPS) (PMID: 1698311). It plays a major role in the inflammatory response of monocytes to LPS.

## Storage

Storage:

Store at 2-8°C. Avoid exposure to light. Stable for one year after shipment.

Storage Buffer:

PBS with 0.09% sodium azide and 0.5% BSA.

For technical support and original validation data for this product please contact:

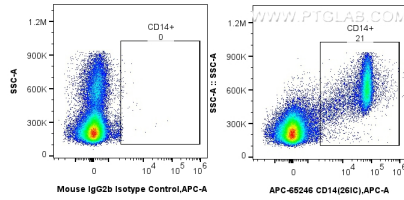
T: 4006900926

E: [Proteintech-CN@ptglab.com](mailto:Proteintech-CN@ptglab.com)

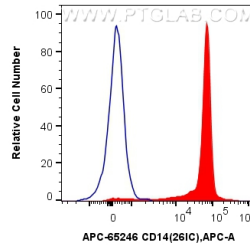
W: [ptgcn.com](http://ptgcn.com)

This product is exclusively available under Proteintech Group brand and is not available to purchase from any other manufacturer.

## Selected Validation Data



1x10<sup>6</sup> human PBMCs were surface stained with 5 ul APC Anti-Human CD14 (26IC) (APC-65246, Clone: 26IC) or APC Mouse IgG2b Isotype Control (MPC-11) (APC-65128, Clone: MPC-11). Cells were incubated with FC Receptor Block prior to staining. Cells were not fixed.



1x10<sup>6</sup> human PBMCs were surface stained with 5 ul APC Anti-Human CD14 (26IC) (APC-65246, Clone: 26IC) (red) or APC Mouse IgG2b Isotype Control (MPC-11) (APC-65128, Clone: MPC-11) (blue). Cells were incubated with FC Receptor Block prior to staining. Cells were not fixed.