

For Research Use Only

APC Anti-Human CD45RO (UCHL1)

Catalog Number: APC-65150



Basic Information

Catalog Number:

APC-65150

Size:

100 tests, 5 ul/test

Source:

Mouse

Isotype:

IgG2a, kappa

GenBank Accession Number:

BC014239

GeneID (NCBI):

5788

ENSEMBL Gene ID:

ENSG00000081237

UNIPROT ID:

P08575

Full Name:

protein tyrosine phosphatase,
receptor type, C

Purification Method:

Affinity purification

CloneNo.:

UCHL1

**Excitation/Emission maxima
wavelengths:**

650 nm / 660 nm

Applications

Tested Applications:

FC

Species Specificity:

human

Background Information

CD45, also known as protein tyrosine phosphatase, receptor type C, is a type I transmembrane protein expressed on the surface of all haematopoietic cells with the exception of erythrocytes and platelets (PMID: 3489673; 28615666). CD45 is a pan-haematopoietic cell marker and has been shown to be essential for T- and B-cell activation and signalling (PMID: 9429890; 16378097). CD45 exists as multiple isoforms due to alternative splicing of three exons (4, 5, and 6, designated A, B, and C) in the extracellular domain (PMID: 12414720). CD45RO is the shortest CD45 isoform (lacking all three exons) and is expressed by activated and memory T cells, thymocytes, some B cells, and weakly on granulocytes and macrophage (PMID: 27100180; 12414720).

Storage

Storage:

Store at 2-8°C. Avoid exposure to light. Stable for one year after shipment.

Storage Buffer:

PBS with 0.09% sodium azide and 0.5% BSA.

For technical support and original validation data for this product please contact:

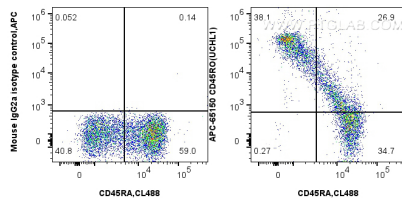
T: 4006900926

E: Proteintech-CN@ptglab.com

W: ptgcn.com

This product is exclusively available under Proteintech Group brand and is not available to purchase from any other manufacturer.

Selected Validation Data



1x10⁶ human PBMCs were surface stained with 5 ul APC Anti-Human CD45RO (APC-65150, Clone:UCHL1) or APC Mouse IgG2a Isotype Control (C1.18.4) (APC-65208, Clone: C1.18.4). Cells were co-stained with CoraLite® Plus 488 Anti-Human CD45RA (HI100) (CL488-65108, Clone: HI100). Cells were not fixed.