

For Research Use Only

APC Anti-Human CD8a (OKT8)

Catalog Number: APC-65135

1 Publications



Basic Information

Catalog Number:

APC-65135

Size:

100 tests, 5 µl/test

Source:

Mouse

Isotype:

IgG2a, kappa

GenBank Accession Number:

BC025715

GeneID (NCBI):

925

ENSEMBL Gene ID:

ENSG00000153563

UNIPROT ID:

P01732

Full Name:

CD8a molecule

Calculated MW:

235 aa, 26 kDa

Purification Method:

Affinity purification

CloneNo.:

OKT8

Excitation/Emission maxima wavelengths:

650 nm / 660 nm

Applications

Tested Applications:

FC

Species Specificity:

Human

Background Information

CD8 is a transmembrane glycoprotein composed of two disulfide-linked chains. It can be present as a homodimer of CD8 α or as a heterodimer of CD8 α and CD8 β (PMID: 3264320; 8253791). CD8 is found on most thymocytes. The majority of class I-restricted T cells express mostly the CD8 α β heterodimer while CD8 α α homodimers alone have been found on some gut intraepithelial T cells, on some T cell receptor (TCR) γ δ T cells and on NK cells (PMID: 2111591; 1831127; 8420975). CD8 acts as a co-receptor that binds to MHC class-I and participates in cytotoxic T cell activation (PMID: 8499079). During T cell development, CD8 is required for positive selection of CD4-/CD8+ T cells (PMID: 1968084).

Notable Publications

Author	Pubmed ID	Journal	Application
Jiang Sun	38346604	Int J Pharm	

Storage

Storage:

Store at 2-8°C. Avoid exposure to light. Stable for one year after shipment.

Storage Buffer:

PBS with 0.09% sodium azide and 0.5% BSA.

For technical support and original validation data for this product please contact:

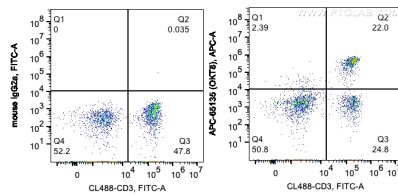
T: 4006900926

E: Proteintech-CN@ptglab.com

W: ptgcn.com

This product is exclusively available under Proteintech Group brand and is not available to purchase from any other manufacturer.

Selected Validation Data



1X10⁶ human PBMCs were surface co-stained with CoraLite® Plus 488 Anti-Human CD3 and 5 ul APC Anti-Human CD8a (APC-65135, Clone:OKT8) or 0.2 ug Mouse IgG2a Isotype Control (66360-2-Ig, Clone: K11A1B2A2). Lymphocytes are gated. Cells were not fixed.