

Atlantic Blue™ Anti-Human CD146 (P1H12)

Catalog Number: **AB-65181**

Basic Information

Catalog Number: AB-65181	GenBank Accession Number: BC056418	Purification Method: Affinity purification
Size: 100tests, 5 ul/test	GeneID (NCBI): 4162	CloneNo.: P1H12
Source: Mouse	UNIPROT ID: P43121	Excitation/Emission maxima wavelengths: 404 nm / 458 nm
Isotype: IgG1, kappa	Full Name: melanoma cell adhesion molecule	
	Calculated MW: 646 aa, 72 kDa	

Applications

Tested Applications:
FC

Species Specificity:
Rabbit, Canine, Mouse, Human

Background Information

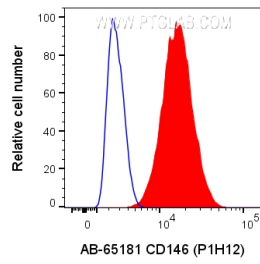
CD146, also known as melanoma cell adhesion molecule (MCAM) or MUC18, originally identified as a biomarker of melanoma progression, is a transmembrane glycoprotein of 113-130 kDa, belonging to the immunoglobulin (Ig) superfamily (PMID: 8378324; 25993332). Structurally, it consists of five Ig domains, a transmembrane domain, and a cytoplasmic region. In normal adult tissue, CD146 is primarily expressed by vascular endothelium and smooth muscle. CD146 is a key cell adhesion protein in vascular endothelial cell activity and angiogenesis, and has been used as marker of circulating endothelium cells (CECs) (PMID: 19356677). In addition to the membrane-anchored form of CD146, a soluble form of CD146 (sCD146, 105 kDa) has also been found in human plasma and in the supernatant of cultured human endothelial cells (PMID: 9462829; 19229070; 16374253; 14597988).

Storage

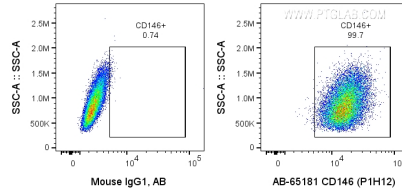
Storage:
Store at 2-8°C. Avoid exposure to light. Stable for one year after shipment.

Storage Buffer:
PBS with 0.09% sodium azide and 0.5% BSA.

Selected Validation Data



1X10⁶ A375 cells were surface stained with 5 ul Atlantic Blue™ Anti-Human CD146 (AB-65181, Clone:P1H12), or Mouse IgG1 Isotype Control. Cells were not fixed.



1X10⁶ A375 cells were surface stained with 5 ul Atlantic Blue™ Anti-Human CD146 (AB-65181, Clone:P1H12), or Mouse IgG1 Isotype Control. Cells were not fixed.