

For Research Use Only

# Anti-Mouse CD3e Rabbit Recombinant Antibody, PBS Only

Catalog Number: 98851-1-PBS



## Basic Information

Catalog Number: 98851-1-PBS	GenBank Accession Number: GeneID (NCBI): 12501	Purification Method: Protein A purification
Concentration: 1mg, 3 mg/ml	UNIPROT ID: P22646	CloneNo.: 260769A1
Source: Rabbit	Full Name: CD3 antigen, epsilon polypeptide	
Isotype: IgG		

## Applications

Tested Applications:  
FC  
Species Specificity:  
mouse

## Background Information

### Storage

Storage:  
Store at -80°C.  
**The product is shipped with ice packs. Upon receipt, store it immediately at -80°C**  
Storage Buffer:  
PBS only, pH7.3

For technical support and original validation data for this product please contact:

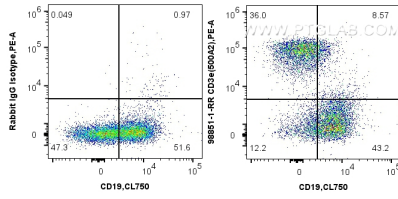
T: 4006900926

E: [Proteintech-CN@ptglab.com](mailto:Proteintech-CN@ptglab.com)

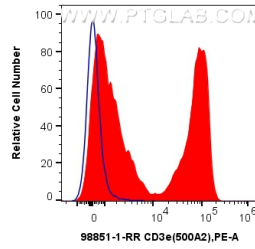
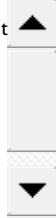
W: [ptgcn.com](http://ptgcn.com)

**This product is exclusively available under Proteintech Group brand and is not available to purchase from any other manufacturer.**

## Selected Validation Data



1x10<sup>6</sup> mouse splenocytes were surface stained with 0.25 ug Anti-Mouse CD3e Rabbit RecAb (98851-1-RR, Clone: 260769A1) or Rabbit IgG Isotype Control Recombinant Antibody (98136-1-RR, Clone: 240953C9), and PE-Conjugated Goat Anti-Rabbit IgG(H+L). Cells were then stained with CoraLite® Plus 750 Anti-Mouse CD19 (1D3) (CL750-65290, Clone: 1D3). Cells were not fixed. This data was developed using the same antibody clone with 98851-1-PBS in a



1x10<sup>6</sup> mouse splenocytes were surface stained with 0.25 ug Anti-Mouse CD3e Rabbit RecAb (98851-1-RR, Clone: 260769A1) (red) or Rabbit IgG Isotype Control Recombinant Antibody (98136-1-RR, Clone: 240953C9) (blue), and PE-Conjugated Goat Anti-Rabbit IgG(H+L). Cells were not fixed. This data was developed using the same antibody clone with 98851-1-PBS in a different storage buffer formulation.