

For Research Use Only

# Anti-Mouse NK1.1 (CD161) Rabbit Recombinant Antibody, PBS Only

Catalog Number: 98820-1-PBS



## Basic Information

Catalog Number:

98820-1-PBS

Concentration:

1mg, 3 mg/ml

Source:

Rabbit

Isotype:

IgG

Immunogen Catalog Number:

EG6938

GenBank Accession Number:

NM\_001159904

GeneID (NCBI):

17059

UNIPROT ID:

P27814

Full Name:

killer cell lectin-like receptor  
subfamily B member 1C

Calculated MW:

25KD

Purification Method:

Protein A purification

CloneNo.:

253074D6

## Applications

Tested Applications:

FC

Species Specificity:

mouse

## Background Information

NK1.1 (CD161), also known as KLRB1 or NKR-P1A, is a type II transmembrane C-type lectin-like receptor and is expressed on the cell membrane as disulfide-linked homodimer (PMID: 8077657). It is expressed by the majority of NK cells and subsets of peripheral T cells, including both CD4+ and CD8+ T cells, and is expressed preferentially on adult T cells with a "memory" antigenic phenotype (PMID: 8077657; 22566826). Expression of CD161 correlates with the cytotoxic function of CD16+ NK cells, and ligation of CD161 with its ligand LLT1 inhibits NK cell cytotoxicity and cytokine secretion (PMID: 29686665).

## Storage

Storage:

Store at -80°C.

**The product is shipped with ice packs. Upon receipt, store it immediately at -80°C**

Storage Buffer:

PBS only, pH7.3

For technical support and original validation data for this product please contact:

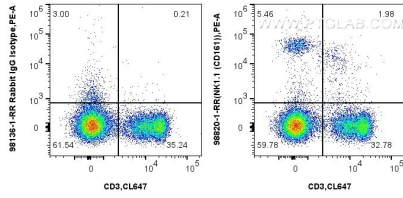
T: 4006900926

E: [Proteintech-CN@ptglab.com](mailto:Proteintech-CN@ptglab.com)

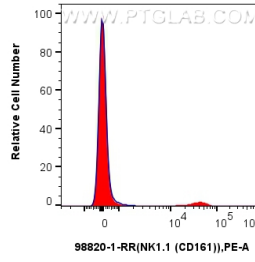
W: [ptgcn.com](http://ptgcn.com)

**This product is exclusively available under Proteintech Group brand and is not available to purchase from any other manufacturer.**

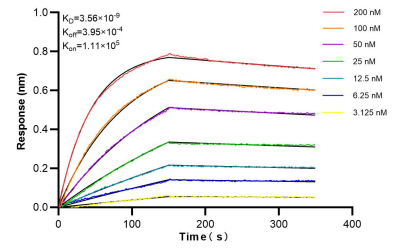
## Selected Validation Data



1x10<sup>6</sup> mouse splenocytes were surface stained with 0.25 ug Anti-Mouse NK1.1 (CD161) Rabbit RecAb (98820-1-RR, Clone: 253074D6) or 0.25 ug Rabbit IgG Isotype Control Recombinant Antibody (98136-1-RR, Clone: 240953C9), and PE-Conjugated Goat Anti-Rabbit IgG(H+L). Cells were then stained with CoraLite® Plus 647 Anti-Mouse CD3. Cells were not fixed. This data was developed using the same antibody clone with 98820-1-PBS in a different storage



1x10<sup>6</sup> mouse splenocytes were surface stained with 0.25 ug Anti-Mouse NK1.1 (CD161) Rabbit RecAb (98820-1-RR, Clone: 253074D6) or 0.25 ug Rabbit IgG Isotype Control Recombinant Antibody (98136-1-RR, Clone: 240953C9), and PE-Conjugated Goat Anti-Rabbit IgG(H+L). Cells were not fixed. This data was developed using the same antibody clone with 98820-1-PBS in a different storage buffer formulation.



Biolayer interferometry (BLI) kinetic assays of 98820-1-RR against Mouse NK1.1 (CD161) were performed. The affinity constant is 3.56 nM.