

For Research Use Only

# Anti-Rat CCL4/MIP-1 beta Rabbit Recombinant Antibody, PBS Only

Catalog Number: 98770-4-PBS



## Basic Information

<b>Catalog Number:</b> 98770-4-PBS	<b>GenBank Accession Number:</b> NM_053858.1	<b>Purification Method:</b> Protein A purification
<b>Concentration:</b> 1mg, 3 mg/ml	<b>GeneID (NCBI):</b> 116637	<b>CloneNo.:</b> 251973F1
<b>Source:</b> Rabbit	<b>UNIPROT ID:</b> P50230	
<b>Isotype:</b> IgG	<b>Full Name:</b> chemokine (C-C motif) ligand 4	
<b>Immunogen Catalog Number:</b> EG3200	<b>Calculated MW:</b> 10 kDa	

## Applications

**Tested Applications:**  
FC (Intra)

**Species Specificity:**  
rat

## Background Information

CCL4, also known as Macrophage inflammatory protein-1 $\beta$  (MIP-1 $\beta$ ), is a CC chemokine with specificity for CCR5 receptors, and is one of the major HIV-suppressive factors produced by CD8+ T-cells. MIP-1 $\beta$  is an acidic protein composed of 69 amino acids that is produced by many cells, particularly macrophages, dendritic cells, and lymphocytes. MIP-1 $\beta$  is responsible for the activation of PMN and is involved in acute neutrophilic inflammation. Recombinant MIP-1 $\beta$  induces a dose-dependent inhibition of different strains of HIV-1, HIV-2, and simian immunodeficiency virus (SIV).

## Storage

**Storage:**  
Store at -80°C.  
**The product is shipped with ice packs. Upon receipt, store it immediately at -80°C**

**Storage Buffer:**  
PBS only, pH7.3

For technical support and original validation data for this product please contact:

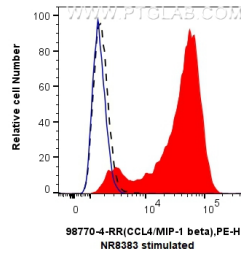
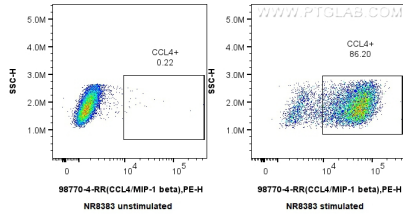
T: 4006900926

E: [Proteintech-CN@ptglab.com](mailto:Proteintech-CN@ptglab.com)

W: [ptgcn.com](http://ptgcn.com)

**This product is exclusively available under Proteintech Group brand and is not available to purchase from any other manufacturer.**

## Selected Validation Data



1x10<sup>6</sup> untreated or LPS-treated NR8383 cells were intracellularly stained with 0.25 ug Anti-Rat CCL4/MIP-1 beta Rabbit RecAb (98770-4-RR, Clone: 251973F1) and PE-Conjugated Goat Anti-Rabbit IgG(H+L). Cells were fixed and permeabilized with Intracellular Flow Cytometry Fixation & Permeabilization Buffer Kit (PF00019). This data was developed using the same antibody clone with 98770-4-PBS in a different storage buffer formulation.

1x10<sup>6</sup> LPS treated NR8383 cells were intracellularly stained with 0.25 ug Anti-Rat CCL4/MIP-1 beta Rabbit RecAb (98770-4-RR, Clone: 251973F1)(red) or Rabbit IgG Isotype Control Recombinant Antibody (98136-1-RR, Clone: 240953C9) (blue), and PE-Conjugated Goat Anti-Rabbit IgG(H+L). 1x10<sup>6</sup> untreated NR8383 were surface stained with 0.25 ug Anti-Rat CCL4/MIP-1 beta Rabbit RecAb (98770-4-RR, Clone: 251973F1) and PE-Conjugated Goat Anti-Rabbit IgG(H+L) (black,

