

For Research Use Only

Anti-Human EPHA1 Rabbit Recombinant Antibody, PBS Only

Catalog Number: 98743-2-PBS



Basic Information

Catalog Number: 98743-2-PBS	GenBank Accession Number: NM_005232.4	Purification Method: Protein A purification
Concentration: 1mg, 3 mg/ml	GeneID (NCBI): 2041	CloneNo.: 252393C12
Source: Rabbit	UNIPROT ID: P21709-1	
Isotype: IgG	Full Name: EPH receptor A1	
Immunogen Catalog Number: EG5474	Calculated MW: 108 kDa	

Applications

Tested Applications:
FC

Species Specificity:
human

Background Information

EPHA1, also named as EPH, EPHT and EPHT1, belongs to ephrin receptor subfamily of the protein-tyrosine kinase family. EPH and EPH-related receptors have been implicated in mediating developmental events, particularly in the nervous system. Receptors in the EPH subfamily typically have a single kinase domain and an extracellular region containing a Cys-rich domain and 2 fibronectin type III repeats. Ligands in the ephrin-A subclass, including the prototype family member ephrin-A1 (B61), are membrane associated through glycosylphosphatidyl-inositol linkages, whereas ephrin-B subclass consists of ligands with transmembrane domains. The general role of the Eph family is in mediating repulsive cell-cell interaction.

Storage

Storage:
Store at -80°C.
The product is shipped with ice packs. Upon receipt, store it immediately at -80°C

Storage Buffer:
PBS only, pH7.3

For technical support and original validation data for this product please contact:

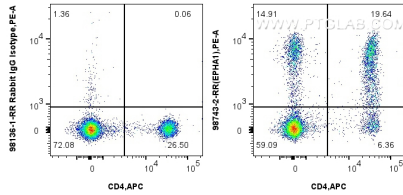
T: 4006900926

E: Proteintech-CN@ptglab.com

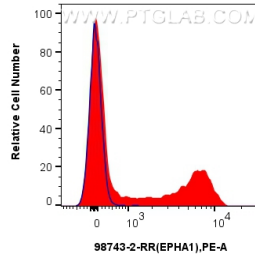
W: ptgcn.com

This product is exclusively available under Proteintech Group brand and is not available to purchase from any other manufacturer.

Selected Validation Data



1x10⁶ human PBMCs were surface stained with 0.25 ug Anti-Human EPHA1 Rabbit RecAb (98743-2-RR, Clone: 252393C12) or 0.25 ug Rabbit IgG Isotype Control Recombinant Antibody (98136-1-RR, Clone: 240953C9), and PE-Conjugated Goat Anti-Rabbit IgG(H+L). Cells were then stained with APC Anti-Human CD4. Cells were not fixed. This data was developed using the same antibody clone with 98743-2-PBS in a different storage buffer formulation.



1x10⁶ human PBMCs were surface stained with 0.25 ug Anti-Human EPHA1 Rabbit RecAb (98743-2-RR, Clone: 252393C12) (red) or 0.25 ug Rabbit IgG Isotype Control Recombinant Antibody (98136-1-RR, Clone: 240953C9) (blue), and PE-Conjugated Goat Anti-Rabbit IgG(H+L). Cells were not fixed. This data was developed using the same antibody clone with 98743-2-PBS in a different storage buffer formulation.