

For Research Use Only

# Mouse IgG1, $\kappa$ Isotype Control Recombinant Antibody

Catalog Number: 98742-2-MR



## Basic Information

Catalog Number:

98742-2-MR

Concentration:

100ug, 1000  $\mu$ g/ml

Source:

Mouse

Isotype:

IgG1, kappa

GenBank Accession Number:

GeneID (NCBI):

Full Name:

Purification Method:

Protein A purification

CloneNo.:

MOPC-21

Recommended Dilutions:

FC: 0.25 ug per  $10^6$  cells in a 100  $\mu$ l suspension

## Applications

Tested Applications:

FC

Species Specificity:

n/a

Positive Controls:

FC : human PBMCs, rat splenocytes

## Background Information

The MOPC-21 immunoglobulin is useful as an isotype-matched control. The MOPC-21 immunoglobulin has an unknown binding specificity and is used as an isotype control for mouse IgG1 antibodies. This antibody has been quality-tested for flow cytometry as a negative control.

## Storage

Storage:

Store at 2 - 8°C. Stable for one year after shipment.

Storage Buffer:

PBS with 0.09% sodium azide, pH7.3

For technical support and original validation data for this product please contact:

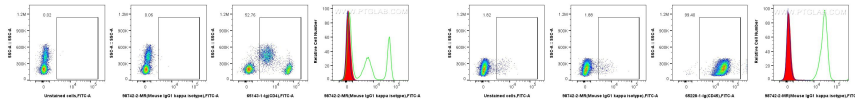
T: 4006900926

E: [Proteintech-CN@ptglab.com](mailto:Proteintech-CN@ptglab.com)

W: [ptgcn.com](http://ptgcn.com)

**This product is exclusively available under Proteintech Group brand and is not available to purchase from any other manufacturer.**

## Selected Validation Data



1x10<sup>6</sup> human PBMCs were surface stained with 0.25 ug Mouse IgG1 kappa isotype control RecAb (98742-2-MR, Clone: MOPC-21) (red in histogram), or 0.25 ug Anti-Human CD4 (RPA-T4) (65143-1-Ig, Clone: RPA-T4) (green in histogram), or unstained (blue in histogram). Cells were then stained with FITC-conjugated Goat Anti-Mouse IgG1. Cells were incubated with FC Receptor Block prior to staining. Cells were not fixed.

1x10<sup>6</sup> rat splenocytes were surface stained with 0.25 ug Mouse IgG1 kappa isotype control RecAb (98742-2-MR, Clone: MOPC-21) (red in histogram), or 0.25 ug Anti-Rat CD45 (OX1) (65228-1-Ig, Clone: OX1) (green in histogram), or unstained (blue in histogram). Cells were then stained with FITC-conjugated Goat Anti-Mouse IgG1. Cells were incubated with FC Receptor Block prior to staining. Cells were not fixed.