

For Research Use Only

Anti-Human Ig Lambda Light Chain Rabbit Recombinant Antibody

Catalog Number: 98723-2-RR



Basic Information

Catalog Number:

98723-2-RR

Concentration:

100ug, 1000 μ g/ml

Source:

Rabbit

Isotype:

IgG

Immunogen Catalog Number:

EG6676

GenBank Accession Number:

GeneID (NCBI):

3500

Full Name:

immunoglobulin heavy constant
gamma 1 (G1m marker)

Purification Method:

Protein A purification

CloneNo.:

251497D8

Recommended Dilutions:

IHC: 1:500-1:2000

FC: 0.25 μ g per 10^6 cells in a 100 μ l
suspension

Applications

Tested Applications:

IHC, FC

Species Specificity:

human

**Note-IHC: suggested antigen retrieval with
TE buffer pH 9.0; (*) Alternatively, antigen
retrieval may be performed with citrate
buffer pH 6.0**

Positive Controls:

IHC: human tonsillitis tissue,

FC: human PBMCs,

Background Information

Human Ig lambda (λ) light chain is one of the two types of light chains (the other being kappa, κ) that constitute the basic building blocks of human antibodies (immunoglobulins). Each antibody molecule contains two identical light chains paired with two identical heavy chains, forming the characteristic Y-shaped structure. It is an essential component of the humoral immune system, providing structural diversity for antigen recognition while serving as a critical diagnostic marker for plasma cell dyscrasias.

Storage

Storage:

Store at 2 - 8°C. Stable for one year after shipment.

Storage Buffer:

PBS with 0.09% sodium azide, pH7.3

For technical support and original validation data for this product please contact:

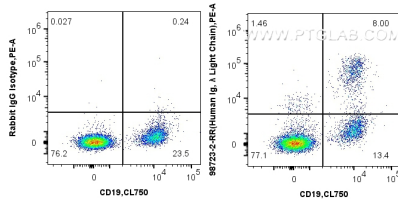
T: 4006900926

E: Proteintech-CN@ptglab.com

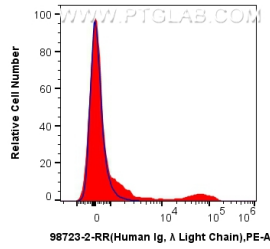
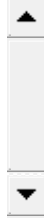
W: ptgcn.com

This product is exclusively available under Proteintech Group brand and is not available to purchase from any other manufacturer.

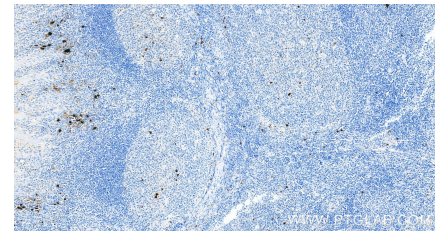
Selected Validation Data



1x10⁶ human PBMCs were surface stained with 0.25 ug Anti-Human Ig Lambda Light Chain Rabbit RecAb (98723-2-RR, Clone: 251497D8) or Rabbit IgG Isotype Control Recombinant Antibody (98136-1-RR, Clone: 240953C9), and PE-Conjugated Goat Anti-Rabbit IgG(H+L). Cells were then stained with CoraLite® Plus 750 Anti-Human CD19. The cells originate from CD11b-negative cells. Cells were incubated with FC Receptor Block prior to staining. Cells were not fixed.



1x10⁶ human PBMCs were surface stained with 0.25 ug Anti-Human Ig Lambda Light Chain Rabbit RecAb (98723-2-RR, Clone: 251497D8) (red) or Rabbit IgG Isotype Control Recombinant Antibody (98136-1-RR, Clone: 240953C9) (blue), and PE-Conjugated Goat Anti-Rabbit IgG(H+L). The cells originate from CD11b-negative cells. Cells were incubated with FC Receptor Block prior to staining. Cells were not fixed.



Immunohistochemical analysis of paraffin-embedded human tonsillitis tissue slide using 98723-2-RR (Human Ig, λ Light Chain antibody) at dilution of 1:1000 (under 20x lens). Heat mediated antigen retrieval with Tris-EDTA buffer (pH 9.0).