

For Research Use Only

Anti-Human TEM1/CD248 Rabbit Recombinant Antibody

Catalog Number: 98709-3-RR



Basic Information

Catalog Number:

98709-3-RR

Concentration:

100ug, 1000 µg/ml

Source:

Rabbit

Isotype:

IgG

Immunogen Catalog Number:

EG4427

GenBank Accession Number:

BC051340

GeneID (NCBI):

57124

UNIPROT ID:

Q9HCU0

Full Name:

CD248 molecule, endosialin

Calculated MW:

757 aa, 81 kDa

Purification Method:

Protein A purification

CloneNo.:

251338B12

Recommended Dilutions:

FC: 0.25 ug per 10⁶ cells in a 100 µl suspension

Applications

Tested Applications:

FC

Species Specificity:

human

Positive Controls:

FC : human peripheral blood lymphocytes,

Background Information

TEM1 (Tumor endothelial marker 1), also named as CD248, Endosialin and CD164L1, is a C-type lectin-like domain (CTLD) containing type I transmembrane glycoprotein. It is now considered to be a highly selective marker for activated perivascular and stromal cells, detected in most cancers and at least some inflammatory disorders. CD248 plays a role in tumor angiogenesis. It is a potential diagnostic tool and therapeutic target of inflammatory and malignant disease. Two isoforms of human TEM1 exist. The calculated molecular weights of the two isoforms are 81 kDa and 46 kDa, respectively. Native TEM1 can be glycosylated, and the glycosylated form has a larger apparent molecular weight than 81 kDa.

Storage

Storage:

Store at 2 - 8°C. Stable for one year after shipment.

Storage Buffer:

PBS with 0.09% sodium azide, pH7.3

For technical support and original validation data for this product please contact:

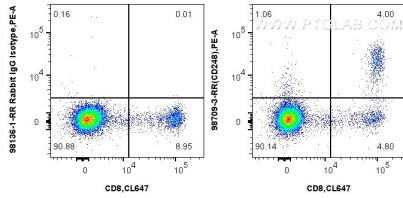
T: 4006900926

E: Proteintech-CN@ptglab.com

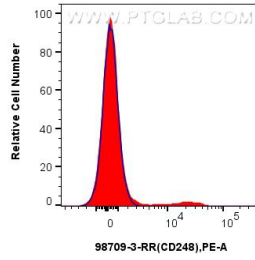
W: ptgcn.com

This product is exclusively available under Proteintech Group brand and is not available to purchase from any other manufacturer.

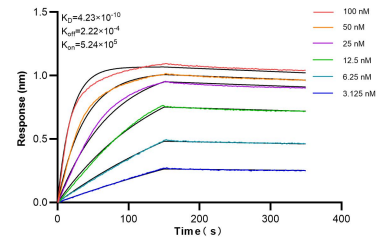
Selected Validation Data



1×10^6 human peripheral blood lymphocytes were surface stained with 0.25 μ g Anti-Human TEM1/CD248 Rabbit RecAb (98709-3-RR, Clone: 251338812) or 0.25 μ g Rabbit IgG Isotype Control RecAb (98136-1-RR, Clone: 240953C9), and PE-Conjugated Goat Anti-Rabbit IgG(H+L). Cells were then stained with CoraLite® Plus 647 Anti-Human CD8 α . Cells were incubated with FC Receptor Block prior to staining. Cells were not fixed.



1×10^6 human peripheral blood lymphocytes were surface stained with 0.25 μ g Anti-Human TEM1/CD248 Rabbit RecAb (98709-3-RR, Clone: 251338812) (red) or 0.25 μ g Rabbit IgG Isotype Control RecAb (98136-1-RR, Clone: 240953C9) (blue), and PE-Conjugated Goat Anti-Rabbit IgG(H+L). Cells were incubated with FC Receptor Block prior to staining. Cells were not fixed.



Bi-layer interferometry (BLI) kinetic assays of 98709-3-RR against Human TEM1/CD248 were performed. The affinity constant is 0.423 nM.