

For Research Use Only

Anti-Human Frizzled 2 Rabbit Recombinant Antibody, PBS Only

Catalog Number: 98707-1-PBS



Basic Information

Catalog Number:

98707-1-PBS

Concentration:

1mg, 3 mg/ml

Source:

Rabbit

Isotype:

IgG

GenBank Accession Number:

BC113402

GeneID (NCBI):

2535

UNIPROT ID:

Q14332

Full Name:

frizzled homolog 2 (Drosophila)

Calculated MW:

565 aa, 64 kDa

Purification Method:

Protein A purification

CloneNo.:

251644E1

Applications

Tested Applications:

FC

Species Specificity:

human

Background Information

Frizzled 2(FZD2) also known as FzE2, which belongs to the G-protein coupled receptor Fz/Smo family. FZD2 is an important receptor in the Wnt pathway, which is highly expressed in malignant tumors and helps regulate multiple tumor behaviors. Its expression level is related to prognosis. Moreover, high level of FZD2 had significant correlation with poor prognosis in Breast cancer (BC) patients(PMID: 33832493).

Storage

Storage:

Store at -80°C.

The product is shipped with ice packs. Upon receipt, store it immediately at -80°C

Storage Buffer:

PBS only, pH7.3

For technical support and original validation data for this product please contact:

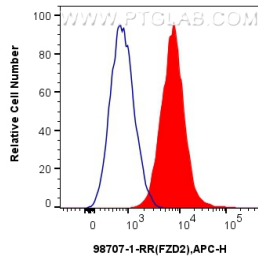
T: 4006900926

E: Proteintech-CN@ptglab.com

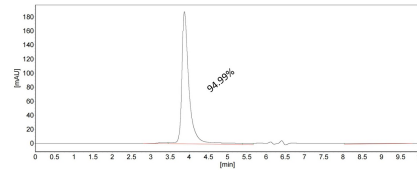
W: ptgcn.com

This product is exclusively available under Proteintech Group brand and is not available to purchase from any other manufacturer.

Selected Validation Data



1×10^6 THP-1 cells were surface stained with 0.25 ug Anti-Human Frizzled 2 Rabbit RecAb (98707-1-RR, Clone: 251644E1) (red) or 0.25 ug Rabbit IgG Isotype Control RecAb (98136-1-RR, Clone: 240953C9) (blue), and APC-Conjugated Goat Anti-Rabbit IgG(H+L). Cells were incubated with FC Receptor Block prior to staining. Cells were not fixed. This data was developed using the same antibody clone with 98707-1-PBS in a different storage buffer formulation.



The purity of Human Frizzled 2 Recombinant monoclonal antibody (Cat. No. 98707-1-RR) was greater than 95% as determined by SEC-HPLC.