

For Research Use Only

Anti-Mouse Integrin beta 5 Rabbit Recombinant Antibody, PBS Only

Catalog Number: 98706-1-PBS



Basic Information

Catalog Number:

98706-1-PBS

Concentration:

1mg, 3 mg/ml

Source:

Rabbit

Isotype:

IgG

Immunogen Catalog Number:

EG10456

GenBank Accession Number:

GeneID (NCBI):

16419

Full Name:

integrin beta 5

Purification Method:

Protein A purification

CloneNo.:

252748H5

Applications

Tested Applications:

FC

Species Specificity:

mouse

Background Information

Integrin beta-5 (ITGB5) is expected to be located in the plasma membrane and mitochondria, which is ubiquitinated in placenta and gall bladder. ITGB5 is a member of integrins and was proved to be associated with pathological processes in several tumors (PMID: 34966851). It is reported that TGB5 is highly expressed in hepatocellular carcinoma (HCC), and miR-185 regulates the expression of β - catenin through the ITGB5-dependent manner and affects the proliferation and migration of HCC cells (PMID: 35223869).

Storage

Storage:

Store at -80°C.

The product is shipped with ice packs. Upon receipt, store it immediately at -80°C

Storage Buffer:

PBS only, pH7.3

For technical support and original validation data for this product please contact:

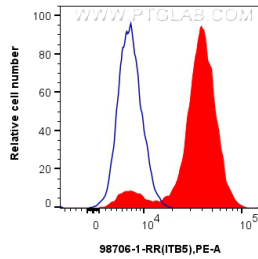
T: 4006900926

E: Proteintech-CN@ptglab.com

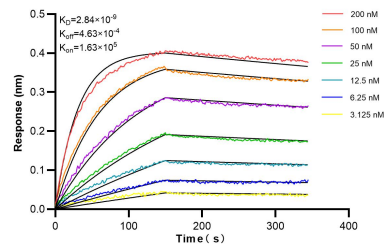
W: ptgcn.com

This product is exclusively available under Proteintech Group brand and is not available to purchase from any other manufacturer.

Selected Validation Data



1×10^6 bEnd.3 cells were surface stained with 0.25 μ g Anti-Mouse Integrin beta 5 Rabbit RecAb (98706-1-RR, Clone: 252748H5) (red) or 0.25 μ g Rabbit IgG Isotype Control RecAb (98136-1-RR, Clone: 240953C9) (blue), and PE-Conjugated Goat Anti-Rabbit IgG(H+L). Cells were not fixed. This data was developed using the same antibody clone with 98706-1-PBS in a different storage buffer formulation.



Biolayer interferometry (BLI) kinetic assays of 98706-1-RR against Mouse Integrin beta 5 were performed. The affinity constant is 2.84 nM.