

For Research Use Only

# Anti-Pig CD8b Rabbit Recombinant Antibody

Catalog Number: 98700-1-RR



## Basic Information

Catalog Number:

98700-1-RR

Concentration:

100ug, 1000 µg/ml

Source:

Rabbit

Isotype:

IgG

Immunogen Catalog Number:

EG7161

GenBank Accession Number:

/

GeneID (NCBI):

396636

UNIPROT ID:

F1SVD7

Full Name:

CD8 subunit beta

Calculated MW:

23 kDa

Purification Method:

Protein A purification

CloneNo.:

251664G7

Recommended Dilutions:

FC: 0.25 ug per 10<sup>6</sup> cells in a 100 µl suspension

## Applications

Tested Applications:

FC

Species Specificity:

pig

Positive Controls:

FC : pig PBMCs,

## Background Information

CD8b (T-cell surface glycoprotein CD8 beta chain) is an integral membrane glycoprotein that forms disulfide-linked heterodimers with CD8a (CD8 alpha chain). The CD8 alpha/beta heterodimer is the predominant CD8 complex expressed on the cell surface (PMID: 1534146; 2111591). CD8 is a transmembrane glycoprotein predominantly expressed on the surface of cytotoxic T cells and can also be found on natural killer cells, cortical thymocytes, and dendritic cells. CD8 serves as a co-receptor for the T cell receptor (TCR). Both CD8 and TCR recognize antigens displayed by an antigen presenting cell (APC) in the context of class I MHC molecules. CD8 plays a role in T cell development and activation of mature T cells.

## Storage

Storage:

Store at 2 - 8°C. Stable for one year after shipment.

Storage Buffer:

PBS with 0.09% sodium azide, pH7.3

For technical support and original validation data for this product please contact:

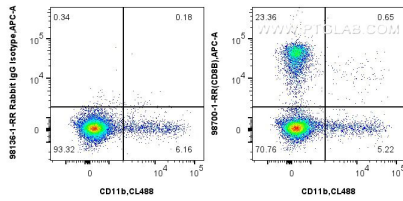
T: 4006900926

E: [Proteintech-CN@ptglab.com](mailto:Proteintech-CN@ptglab.com)

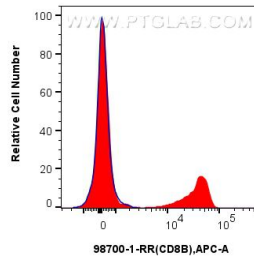
W: [ptgcn.com](http://ptgcn.com)

**This product is exclusively available under Proteintech Group brand and is not available to purchase from any other manufacturer.**

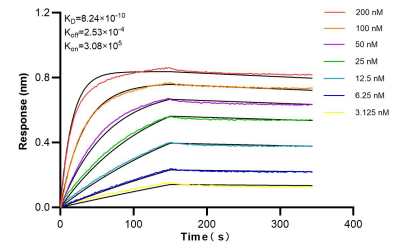
## Selected Validation Data



1x10<sup>6</sup> pig PBMCs were surface stained with 0.25 ug Anti-Pig CD8B Rabbit RecAb (98700-1-RR, Clone:251664G7), or 0.25 ug Rabbit IgG Isotype Control RecAb (98136-1-RR, Clone: 240953C9) and APC-Conjugated Goat Anti-Rabbit IgG(H+L). Cells were then stained with CoraLite® Plus 488 Anti-Mouse CD11b. Cells were not fixed.



1x10<sup>6</sup> pig PBMCs were surface stained with 0.25 ug Anti-Pig CD8B Rabbit RecAb (98700-1-RR, Clone:251664G7) (red), or 0.25 ug Rabbit IgG Isotype Control RecAb (98136-1-RR, Clone: 240953C9) (blue) and APC-Conjugated Goat Anti-Rabbit IgG(H+L). Cells were not fixed.



Bi-layer interferometry (BLI) kinetic assays of 98700-1-RR against Pig CD8b were performed. The affinity constant is 0.824 nM.