

For Research Use Only

Anti-Pig CD8b Rabbit Recombinant Antibody, PBS Only

Catalog Number: 98700-1-PBS



Basic Information

Catalog Number: 98700-1-PBS	GenBank Accession Number: /	Purification Method: Protein A purification
Concentration: 1mg, 3 mg/ml	GeneID (NCBI): 396636	CloneNo.: 251664G7
Source: Rabbit	UNIPROT ID: F1SVD7	
Isotype: IgG	Full Name: CD8 subunit beta	
Immunogen Catalog Number: EG7161	Calculated MW: 23 kDa	

Applications

Tested Applications:
FC

Species Specificity:
pig

Background Information

CD8b (T-cell surface glycoprotein CD8 beta chain) is an integral membrane glycoprotein that forms disulfide-linked heterodimers with CD8a (CD8 alpha chain). The CD8 alpha/beta heterodimer is the predominant CD8 complex expressed on the cell surface (PMID: 1534146; 2111591). CD8 is a transmembrane glycoprotein predominantly expressed on the surface of cytotoxic T cells and can also be found on natural killer cells, cortical thymocytes, and dendritic cells. CD8 serves as a co-receptor for the T cell receptor (TCR). Both CD8 and TCR recognize antigens displayed by an antigen presenting cell (APC) in the context of class I MHC molecules. CD8 plays a role in T cell development and activation of mature T cells.

Storage

Storage:
Store at -80°C.
The product is shipped with ice packs. Upon receipt, store it immediately at -80°C

Storage Buffer:
PBS only, pH7.3

For technical support and original validation data for this product please contact:

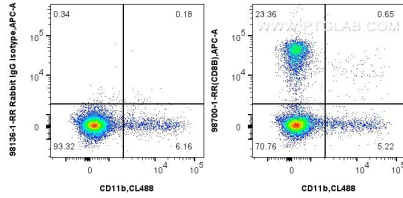
T: 4006900926

E: Proteintech-CN@ptglab.com

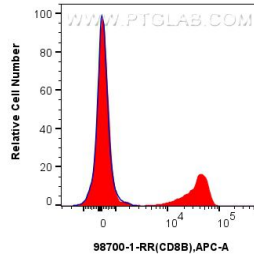
W: ptgcn.com

This product is exclusively available under Proteintech Group brand and is not available to purchase from any other manufacturer.

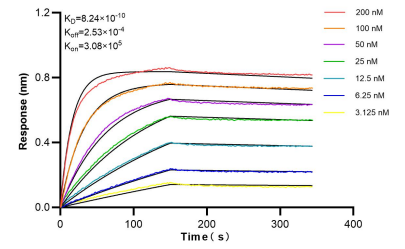
Selected Validation Data



1x10⁶ pig PBMCs were surface stained with 0.25 ug Anti-Pig CD8B Rabbit RecAb (98700-1-RR, Clone:251664G7), or 0.25 ug Rabbit IgG Isotype Control RecAb (98136-1-RR, Clone: 240953C9) and APC-Conjugated Goat Anti-Rabbit IgG(H+L). Cells were then stained with CoraLite® Plus 488 Anti-Mouse CD11b. Cells were not fixed. This data was developed using the same antibody clone with 98700-1-PBS in a different storage buffer formulation.



1x10⁶ pig PBMCs were surface stained with 0.25 ug Anti-Pig CD8B Rabbit RecAb (98700-1-RR, Clone:251664G7) (red), or 0.25 ug Rabbit IgG Isotype Control RecAb (98136-1-RR, Clone: 240953C9) (blue) and APC-Conjugated Goat Anti-Rabbit IgG(H+L). Cells were not fixed. This data was developed using the same antibody clone with 98700-1-PBS in a different storage buffer formulation.



Bi-layer interferometry (BLI) kinetic assays of 98700-1-RR against Pig CD8b were performed. The affinity constant is 0.824 nM.