

For Research Use Only

Anti-Canine CXCL8/IL-8 Rabbit Recombinant Antibody

Catalog Number: 98689-3-RR



Basic Information

Catalog Number:

98689-3-RR

Concentration:

100ug, 1000 µg/ml

Source:

Rabbit

Isotype:

IgG

Immunogen Catalog Number:

EG4552

GenBank Accession Number:

NM_001003200.1

GeneID (NCBI):

403850

UNIPROT ID:

P41324

Full Name:

Interleukin-8

Calculated MW:

11 kDa

Purification Method:

Protein A purification

CloneNo.:

251306F2

Recommended Dilutions:

FC (Intra): 0.25 ug per 10⁶ cells in a 100 µl suspension

Applications

Tested Applications:

FC (Intra)

Species Specificity:

canine

Positive Controls:

FC (Intra) : Transfected CHO,

Background Information

Interleukin 8 (IL-8), also known as CXCL8, is a CXC chemokine family member. This chemokine is secreted by a variety of cell types including monocyte/macrophages, T cells, neutrophils, fibroblasts, endothelial cells, and various tumor cell lines in response to inflammatory stimuli. IL-8 has two primary functions. It induces chemotaxis in target cells, primarily neutrophils but also other granulocytes, causing them to migrate toward the site of infection. IL-8 also induces phagocytosis once they have arrived. This gene is believed to play a role in the pathogenesis of bronchiolitis, a common respiratory tract disease caused by viral infection. IL-8 is also known to be a potent promoter of angiogenesis. IL-8 has been associated with tumor angiogenesis, metastasis, and poor prognosis in breast cancer. IL-8 may present a novel therapeutic target for estrogen driven breast carcinogenesis and tumor progression.

Storage

Storage:

Store at 2 - 8°C. Stable for one year after shipment.

Storage Buffer:

PBS with 0.09% sodium azide, pH7.3

For technical support and original validation data for this product please contact:

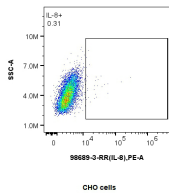
T: 4006900926

E: Proteintech-CN@ptglab.com

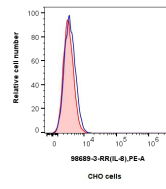
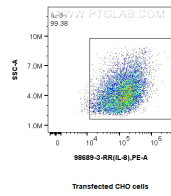
W: ptgcn.com

This product is exclusively available under Proteintech Group brand and is not available to purchase from any other manufacturer.

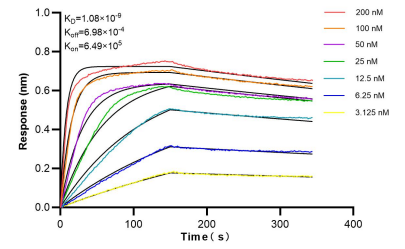
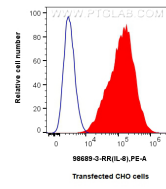
Selected Validation Data



1x10⁶ CHO cells and IL-8 Transfected CHO cells were intracellularly stained with 0.25 ug Anti-Canine IL-8 Rabbit RecAb (98689-3-RR, Clone:251306F2), or 0.25 ug Rabbit IgG Isotype Control RecAb (98136-1-RR, Clone: 240953C9), and PE-Conjugated Goat Anti-Rabbit IgG(H+L). Cells were fixed with 4% PFA and permeabilized with Flow Cytometry Perm Buffer (PF00017).



1x10⁶ CHO cells and IL-8 Transfected CHO cells were intracellularly stained with 0.25 ug Anti-Canine IL-8 Rabbit RecAb (98689-3-RR, Clone:251306F2) (red), or 0.25 ug Rabbit IgG Isotype Control RecAb (98136-1-RR, Clone: 240953C9) (blue), and PE-Conjugated Goat Anti-Rabbit IgG(H+L). Cells were fixed with 4% PFA and permeabilized with Flow Cytometry Perm Buffer (PF00017).



Bi-layer interferometry (BLI) kinetic assays of 98689-3-RR against Canine CXCL8/IL-8 were performed. The affinity constant is 1.08 nM.