

For Research Use Only

Anti-Canine CXCL8/IL-8 Rabbit Recombinant Antibody, PBS Only

Catalog Number: 98689-3-PBS



Basic Information

Catalog Number: 98689-3-PBS	GenBank Accession Number: NM_001003200.1	Purification Method: Protein A purification
Concentration: 1mg, 3 mg/ml	GeneID (NCBI): 403850	CloneNo.: 251306F2
Source: Rabbit	UNIPROT ID: P41324	
Isotype: IgG	Full Name: Interleukin-8	
Immunogen Catalog Number: EG4552	Calculated MW: 11 kDa	

Applications

Tested Applications:
FC (Intra)

Species Specificity:
canine

Background Information

Interleukin 8 (IL-8), also known as CXCL8, is a CXC chemokine family member. This chemokine is secreted by a variety of cell types including monocyte/macrophages, T cells, neutrophils, fibroblasts, endothelial cells, and various tumor cell lines in response to inflammatory stimuli. IL-8 has two primary functions. It induces chemotaxis in target cells, primarily neutrophils but also other granulocytes, causing them to migrate toward the site of infection. IL-8 also induces phagocytosis once they have arrived. This gene is believed to play a role in the pathogenesis of bronchiolitis, a common respiratory tract disease caused by viral infection. IL-8 is also known to be a potent promoter of angiogenesis. IL-8 has been associated with tumor angiogenesis, metastasis, and poor prognosis in breast cancer. IL-8 may present a novel therapeutic target for estrogen driven breast carcinogenesis and tumor progression.

Storage

Storage:
Store at -80°C.
The product is shipped with ice packs. Upon receipt, store it immediately at -80°C

Storage Buffer:
PBS only, pH7.3

For technical support and original validation data for this product please contact:

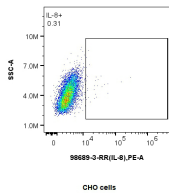
T: 4006900926

E: Proteintech-CN@ptglab.com

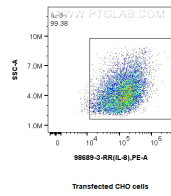
W: ptgcn.com

This product is exclusively available under Proteintech Group brand and is not available to purchase from any other manufacturer.

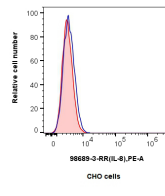
Selected Validation Data



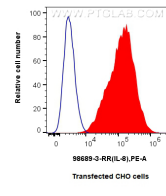
CHO cells



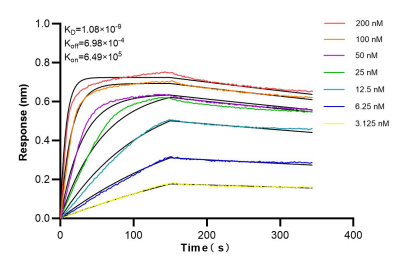
Transfected CHO cells



CHO cells



Transfected CHO cells



1x10⁶ CHO cells and IL-8 Transfected CHO cells were intracellularly stained with 0.25 ug Anti-Canine IL-8 Rabbit RecAb (98689-3-RR, Clone:251306F2), or 0.25 ug Rabbit IgG Isotype Control RecAb (98136-1-RR, Clone: 240953C9), and PE-Conjugated Goat Anti-Rabbit IgG(H+L). Cells were fixed with 4% PFA and permeabilized with Flow Cytometry Perm Buffer (PF00017). This data was developed using the same antibody clone with 98689-3-PBS in a different storage buffer

1x10⁶ CHO cells and IL-8 Transfected CHO cells were intracellularly stained with 0.25 ug Anti-Canine IL-8 Rabbit RecAb (98689-3-RR, Clone:251306F2) (red), or 0.25 ug Rabbit IgG Isotype Control RecAb (98136-1-RR, Clone: 240953C9) (blue), and PE-Conjugated Goat Anti-Rabbit IgG(H+L). Cells were fixed with 4% PFA and permeabilized with Flow Cytometry Perm Buffer (PF00017). This data was developed using the same antibody clone with 98689-3-PBS in a different storage buffer

Bioluminescence resonance energy transfer (BRET) kinetic assays of 98689-3-RR against Canine CXCL8/IL-8 were performed. The affinity constant is 1.08 nM.