

For Research Use Only

# Anti-Human CRHR1 Rabbit Recombinant Antibody, PBS Only

Catalog Number: 98686-2-PBS



## Basic Information

Catalog Number:

98686-2-PBS

Concentration:

1mg, 3 mg/ml

Source:

Rabbit

Isotype:

IgG

GenBank Accession Number:

NM\_004382

GeneID (NCBI):

1394

UNIPROT ID:

P34998

Full Name:

corticotropin releasing hormone receptor 1

Calculated MW:

48 kDa

Purification Method:

Protein A purification

CloneNo.:

251134A8

## Applications

Tested Applications:

FC

Species Specificity:

human

## Background Information

Corticotropin-releasing hormone (CRH, also known as Corticotropin-releasing factor, CRF) is a 41 amino acid peptide hormone and a key regulator of the stress response. CRH and the related urocortin peptides (UCN, UCN2 and UCN3) mediate their actions through two mammalian receptor subtypes, CRHR1 and CRHR2 (PMID: 23863939). CRHR1 (also known as CRFR1) exhibits high affinity towards CRH and UCN but low affinity towards UCN2 and no affinity towards UCN3 (PMID: 22684850). The activity of this receptor is mediated by G proteins which activate adenylyl cyclase. Widely distributed throughout the brain, CRHR1 critically controls behavioral adaptation to stress and is causally linked to emotional disorders (PMID: 21885734). Alternative splicing results in multiple transcript variants encoding distinct isoforms of CRHR1.

## Storage

Storage:

Store at -80°C.

**The product is shipped with ice packs. Upon receipt, store it immediately at -80°C**

Storage Buffer:

PBS only, pH7.3

For technical support and original validation data for this product please contact:

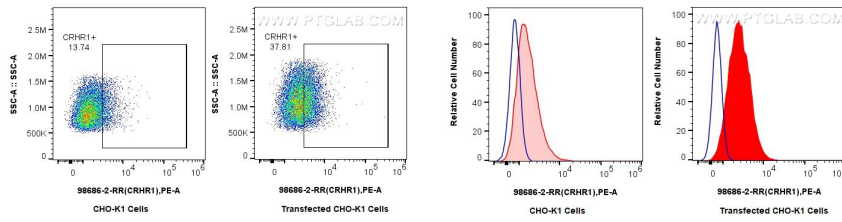
T: 4006900926

E: [Proteintech-CN@ptglab.com](mailto:Proteintech-CN@ptglab.com)

W: [ptgcn.com](http://ptgcn.com)

**This product is exclusively available under Proteintech Group brand and is not available to purchase from any other manufacturer.**

## Selected Validation Data



1x10<sup>6</sup> CHO-K1 (left) or CRHR1-transfected CHO-K1 (right) were surface stained with 0.25 ug Anti-Human CRHR1 Rabbit RecAb (98686-2-RR, Clone: 251134A8) and PE-conjugated Goat Anti-Rabbit IgG. Cells were not fixed. This data was developed using the same antibody clone with 98686-2-PBS in a different storage buffer formulation.

1x10<sup>6</sup> CHO-K1 (left) or CRHR1-transfected CHO-K1(right) were surface stained with 0.25 ug Anti-Human CRHR1 Rabbit RecAb (98686-2-RR, Clone: 251134A8) (red) or 0.25 ug Rabbit IgG Isotype Control RecAb (98136-1-RR, Clone: 240953C9) (blue), and PE-conjugated Goat Anti-Rabbit IgG. Cells were not fixed. This data was developed using the same antibody clone with 98686-2-PBS in a different storage buffer formulation.