

For Research Use Only

# Anti-Human PKD2L2 Rabbit Recombinant Antibody, PBS Only

Catalog Number: 98682-1-PBS



## Basic Information

Catalog Number:

98682-1-PBS

Concentration:

1mg, 3 mg/ml

Source:

Rabbit

Isotype:

IgG

GenBank Accession Number:

BC044581

GeneID (NCBI):

27039

UNIPROT ID:

Q9NZM6

Full Name:

polycystic kidney disease 2-like 2

Calculated MW:

74 kDa

Purification Method:

Protein A purification

CloneNo.:

251120E1

## Applications

Tested Applications:

FC

Species Specificity:

human

## Background Information

PKD2L2 (Polycystin-2-like protein 2) is a transient receptor potential (TRP) ion channel, specifically a member of the TRPP (Polycystin) subfamily. PKD2L2 exhibits a lower single conductance but no spontaneous channel activity (PMID:16883570).

## Storage

Storage:

Store at -80°C.

**The product is shipped with ice packs. Upon receipt, store it immediately at -80°C**

Storage Buffer:

PBS only, pH7.3

For technical support and original validation data for this product please contact:

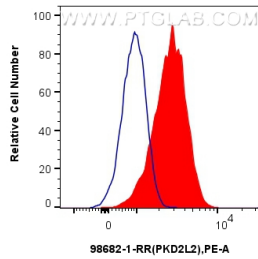
T: 4006900926

E: [Proteintech-CN@ptglab.com](mailto:Proteintech-CN@ptglab.com)

W: [ptgcn.com](http://ptgcn.com)

**This product is exclusively available under Proteintech Group brand and is not available to purchase from any other manufacturer.**

## Selected Validation Data



1x10<sup>6</sup> U2OS cells were surface stained with 0.25 ug Anti-Human PKD2L2 Rabbit RecAb (98682-1-RR, Clone:251120E1) and PE-conjugated Goat Anti-Rabbit IgG (red), or 0.25 ug Rabbit IgG Isotype Control RecAb (98136-1-RR, Clone: 240953C9) (blue) and PE-conjugated Goat Anti-Rabbit IgG. Cells were not fixed. This data was developed using the same antibody clone with 98682-1-PBS in a different storage buffer formulation.