

For Research Use Only

# Anti-Whitlow/218 Linker Rabbit Recombinant Antibody

Catalog Number: 98672-3-RR



## Basic Information

Catalog Number:

98672-3-RR

Concentration:

100ug, 1000  $\mu$ g/ml

Source:

Rabbit

Isotype:

IgG

GenBank Accession Number:

GeneID (NCBI):

Full Name:

Purification Method:

Protein A purification

CloneNo.:

252007G1

Recommended Dilutions:

IHC: 1:500-1:2000

IF/ICC: 1:200-1:800

FC: 0.25  $\mu$ g per  $10^6$  cells in a 100  $\mu$ l suspension

## Applications

Tested Applications:

IHC, IF/ICC, FC

Species Specificity:

n/a

**Note-IHC: suggested antigen retrieval with TE buffer pH 9.0; (\*) Alternatively, antigen retrieval may be performed with citrate buffer pH 6.0**

Positive Controls:

IHC: 293T cell (218Linker) ,

IF/ICC: Transfected CHO cells,

FC: Transfected HEK-293T cells,

## Background Information

The 218 Linker (also known as the Whitlow linker) is a synthetic peptide sequence, connecting two protein domains, most commonly the Variable Heavy (VH) and Variable Light (VL) chains of an antibody, to form a stable single-chain variable fragment (scFv) (PMID: 8309948). Its standard amino acid sequence is GSTSGSGKPGSGEGSTKG.

## Storage

Storage:

Store at 2 - 8°C. Stable for one year after shipment.

Storage Buffer:

PBS with 0.09% sodium azide, pH7.3

For technical support and original validation data for this product please contact:

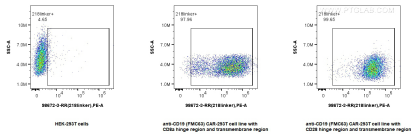
T: 4006900926

E: Proteintech-CN@ptglab.com

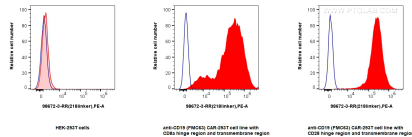
W: ptgcn.com

**This product is exclusively available under Proteintech Group brand and is not available to purchase from any other manufacturer.**

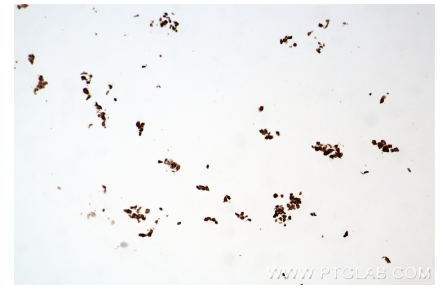
## Selected Validation Data



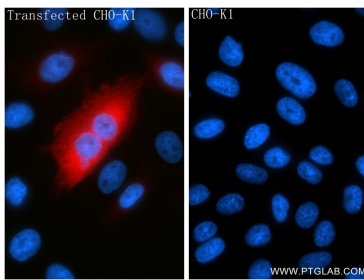
1x10<sup>6</sup> HEK-293T cells or anti-CD19 (FMC63) CAR with CD28 or CD8a hinge region and transmembrane region transfected HEK-293T cells were surface stained with 0.25 ug Anti-Whitlow/218 Linker Rabbit RecAb (98672-3-RR, Clone:252007G8), or 0.25 ug Rabbit IgG Isotype Control RecAb (98136-1-RR, Clone: 240953C9), and PE-Conjugated Goat Anti-Rabbit IgG(H+L). Cells were not fixed.



1x10<sup>6</sup> HEK-293T cells or anti-CD19 (FMC63) CAR with CD28 or CD8a hinge region and transmembrane region transfected HEK-293T cells were surface stained with 0.25 ug Anti-Whitlow/218 Linker Rabbit RecAb (98672-3-RR, Clone:252007G8) (red), or 0.25 ug Rabbit IgG Isotype Control RecAb (98136-1-RR, Clone: 240953C9) (blue), and PE-Conjugated Goat Anti-Rabbit IgG(H+L). Cells were not fixed.



Immunohistochemical analysis of paraffin-embedded transfected HEK-293T cells slide using 98672-3-RR (Whitlow/218 Linker antibody) at dilution of 1:1000 (under 10x Lens). Heat mediated antigen retrieval with Tris-EDTA buffer (pH 9.0).



Immunofluorescent analysis of (4% PFA) fixed Transfected CHO cells using 218linker antibody (98672-3-RR, Clone: 252007G1) at dilution of 1:400 and CoraLite®594-Conjugated Goat Anti-Rabbit IgG(H+L) (SA00013-4).