

For Research Use Only

Anti-Human GPR37 Rabbit Recombinant Antibody, PBS Only

Catalog Number: 98665-1-PBS



Basic Information

Catalog Number: 98665-1-PBS	GenBank Accession Number: NM_005302.5	Purification Method: Protein A purification
Concentration: 1mg, 3 mg/ml	GeneID (NCBI): 2861	CloneNo.: 252205H8
Source: Rabbit	UNIPROT ID: O15354	
Isotype: IgG	Full Name: G protein-coupled receptor 37 (endothelin receptor type B-like)	
Immunogen Catalog Number: EG5426	Calculated MW: 67 kDa	

Applications

Tested Applications:
FC

Species Specificity:
human

Background Information

The orphan G protein-coupled receptor GPR37, also known as PAELR (parkin-associated endothelin receptor-like receptor) or ETBR-LP-1 (endothelin B receptor-like protein 1), is a 613 aa, multi-pass membrane protein predominantly expressed in the brain. It is a substrate of parkin (PARK2). When overexpressed in cells, GPR37 tends to become insoluble, unfolded, and ubiquitinated in vivo. Accumulation of the unfolded protein may lead to dopaminergic neuronal death in juvenile Parkinson disease (JPD).

Storage

Storage:
Store at -80°C.
The product is shipped with ice packs. Upon receipt, store it immediately at -80°C

Storage Buffer:
PBS only, pH7.3

For technical support and original validation data for this product please contact:

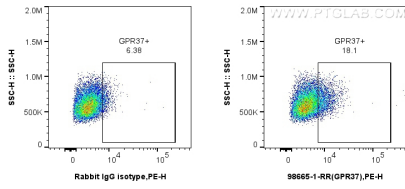
T: 4006900926

E: Proteintech-CN@ptglab.com

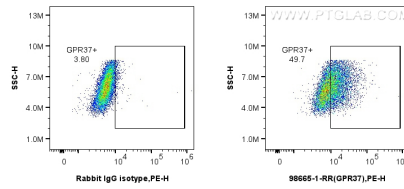
W: ptgcn.com

This product is exclusively available under Proteintech Group brand and is not available to purchase from any other manufacturer.

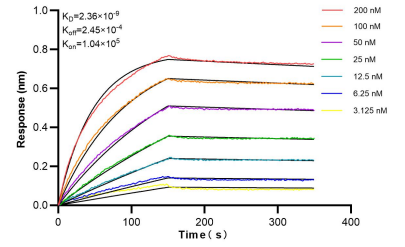
Selected Validation Data



1x10⁶ THP-1 cells were surface stained with 0.25 ug Anti-Human GPR37 Rabbit RecAb (98665-1-RR, Clone: 252205H8) or 0.25 ug Rabbit IgG Isotype Control Recombinant Antibody (98136-1-RR, Clone: 240953C9), and PE-Conjugated Goat Anti-Rabbit IgG(H+L). Cells were incubated with FC Receptor Block prior to staining. Cells were not fixed. This data was developed using the same antibody clone with 98665-1-PBS in a different storage buffer formulation.



1x10⁶ A172 cells were surface stained with 0.25 ug Anti-Human GPR37 Rabbit RecAb (98665-1-RR, Clone: 252205H8) or 0.25 ug Rabbit IgG Isotype Control Recombinant Antibody (98136-1-RR, Clone: 240953C9), and PE-Conjugated Goat Anti-Rabbit IgG(H+L). Cells were not fixed. This data was developed using the same antibody clone with 98665-1-PBS in a different storage buffer formulation.



Biolayer interferometry (BLI) kinetic assays of 98665-1-RR against Human GPR37 were performed. The affinity constant is 2.36 nM.