

For Research Use Only

# Anti-Human TRPV2 Rabbit Recombinant Antibody

Catalog Number: 98654-2-RR



## Basic Information

**Catalog Number:**

98654-2-RR

**Concentration:**

100ug, 1000 µg/ml

**Source:**

Rabbit

**Isotype:**

IgG

**GenBank Accession Number:**

BC018926

**GeneID (NCBI):**

51393

**UNIPROT ID:**

Q9Y5S1

**Full Name:**

transient receptor potential cation channel, subfamily V, member 2

**Calculated MW:**

764 aa, 86 kDa

**Purification Method:**

Protein A purification

**CloneNo.:**

251093A1

**Recommended Dilutions:**

FC: 0.25 ug per 10<sup>6</sup> cells in a 100 µl suspension

## Applications

**Tested Applications:**

FC

**Species Specificity:**

human

**Positive Controls:**

FC : Transfected CHO cells,

## Background Information

Transient receptor potential vanilloid 2 (TRPV2), also name as VRL-1, plays a critical role in neuronal development, cardiac function, immunity, and cancer (PMID: 31566564). It has been found to play an essential role in sustained intracellular Ca<sup>2+</sup> concentration increase (PMID: 31857697). It's reported that TRPV2 is activated by high temperatures, with a threshold of around 52°C (PMID: 10201375).

## Storage

**Storage:**

Store at 2 - 8°C. Stable for one year after shipment.

**Storage Buffer:**

PBS with 0.09% sodium azide, pH7.3

For technical support and original validation data for this product please contact:

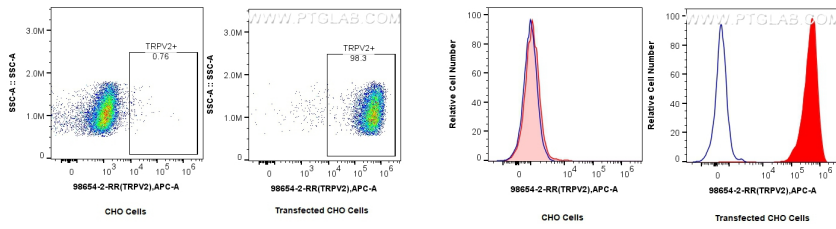
T: 4006900926

E: Proteintech-CN@ptglab.com

W: ptgcn.com

This product is exclusively available under Proteintech Group brand and is not available to purchase from any other manufacturer.

## Selected Validation Data



1x10<sup>6</sup> CHO cells or TRPV2 transfected CHO cells were surface stained with 0.25 ug Anti-Human TRPV2 Rabbit RecAb (98654-2-RR, Clone: 251093A1) and CoraLite647-conjugated F(ab')<sub>2</sub> Fragment Donkey Anti-Rabbit IgG (H+L) (SA00014-7). Cells were not fixed.

1x10<sup>6</sup> CHO cells(left) or TRPV2 transfected CHO cells(right) were surface stained with 0.25 ug Anti-Human TRPV2 Rabbit RecAb (98654-2-RR, Clone: 251093A1) (red) or 0.25 ug Rabbit IgG Isotype Control RecAb (98136-1-RR, Clone: 240953C9) (blue), and CoraLite647-conjugated F(ab')<sub>2</sub> Fragment Donkey Anti-Rabbit IgG (H+L) (SA00014-7). Cells were not fixed.