

For Research Use Only

# Anti-Human CD158Z/KIR3DL3 Rabbit Recombinant Antibody, PBS Only

Catalog Number: 98628-1-PBS



## Basic Information

Catalog Number:

98628-1-PBS

Concentration:

1mg, 3 mg/ml

Source:

Rabbit

Isotype:

IgG

Immunogen Catalog Number:

EG4358

GenBank Accession Number:

/

GeneID (NCBI):

115653

UNIPROT ID:

Q8N743

Full Name:

killer cell immunoglobulin-like receptor, three domains, long cytoplasmic tail, 3

Calculated MW:

45 kDa

Purification Method:

Protein A purification

CloneNo.:

250254F12

## Applications

Tested Applications:

FC

Species Specificity:

human

## Background Information

CD158z, also known as KIR3DL3, is an inhibitory receptor belonging to the Killer-cell Immunoglobulin-like Receptor (KIR) family. It plays a critical role in the regulation of the human immune system, specifically by modulating the activity of natural killer (NK) cells and certain T cells

## Storage

Storage:

Store at -80°C.

**The product is shipped with ice packs. Upon receipt, store it immediately at -80°C**

Storage Buffer:

PBS only, pH7.3

For technical support and original validation data for this product please contact:

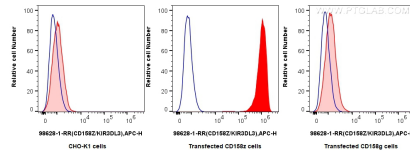
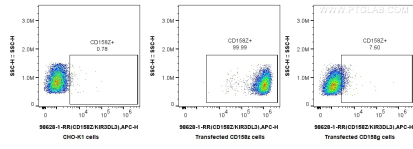
T: 4006900926

E: [Proteintech-CN@ptglab.com](mailto:Proteintech-CN@ptglab.com)

W: [ptgcn.com](http://ptgcn.com)

**This product is exclusively available under Proteintech Group brand and is not available to purchase from any other manufacturer.**

## Selected Validation Data



1x10<sup>6</sup> Transfected CHO-K1 or Transfected CD158z or Transfected CD158g were surface stained with 0.25 ug Anti-Human CD158Z/KIR3DL3 Rabbit RecAb (98628-1-RR, Clone:250254F12) and APC-Conjugated Goat Anti-Rabbit IgG(H+L). Cells were fixed and permeabilized with Intracellular Flow Cytometry Fixation & Permeabilization Buffer Kit (PF00019). This data was developed using the same antibody clone with 98628-1-PBS in a different storage buffer formulation.



1x10<sup>6</sup> Transfected CHO-K1 or Transfected CD158z or Transfected CD158g were surface stained with 0.25 ug Anti-Human CD158Z/KIR3DL3 Rabbit RecAb (98628-1-RR, Clone:250254F12) (red), or Rabbit IgG Isotype Control RecAb (98136-1-RR, Clone: 240953C9) (blue) and APC-Conjugated Goat Anti-Rabbit IgG(H+L). Cells were fixed and permeabilized with Intracellular Flow Cytometry Fixation & Permeabilization Buffer Kit (PF00019). This data was developed using the same antibody

