

For Research Use Only

Anti-Human IL12RB2 Rabbit Recombinant Antibody

Catalog Number: 98621-2-RR



Basic Information

Catalog Number:

98621-2-RR

Concentration:

100ug, 1000 µg/ml

Source:

Rabbit

Isotype:

IgG

Immunogen Catalog Number:

EG4745

GenBank Accession Number:

NM_001559.2

GeneID (NCBI):

3595

UNIPROT ID:

Q99665-1

Full Name:

interleukin 12 receptor, beta 2

Calculated MW:

97 kDa

Purification Method:

Protein A purification

CloneNo.:

251356B12

Recommended Dilutions:

FC: 0.25 ug per 10⁶ cells in a 100 µl suspension

Applications

Tested Applications:

FC

Species Specificity:

human

Positive Controls:

FC : PHA treated human PBMCs,

Background Information

Storage

Storage:

Store at 2 - 8°C. Stable for one year after shipment.

Storage Buffer:

PBS with 0.09% sodium azide, pH7.3

For technical support and original validation data for this product please contact:

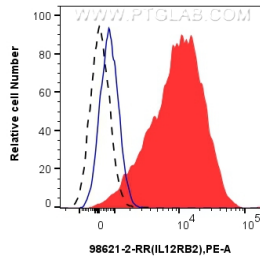
T: 4006900926

E: Proteintech-CN@ptglab.com

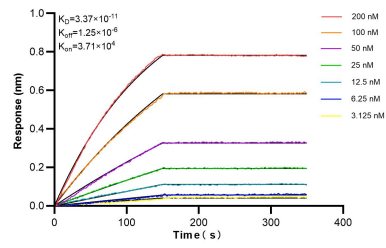
W: ptgcn.com

This product is exclusively available under Proteintech Group brand and is not available to purchase from any other manufacturer.

Selected Validation Data



1x10⁶ PHA-treated human PBMCs were surface stained with 0.25 ug Anti-Human IL12RB2 Rabbit RecAb (98621-2-RR, Clone: 251356B12) (red) or Rabbit IgG Isotype Control RecAb (98136-1-RR, Clone: 240953C9) (blue), and PE-Conjugated Goat Anti-Rabbit IgG(H+L). Untreated human PBMCs were surface stained with 0.25 ug Anti-Human IL12RB2 Rabbit RecAb (98621-2-RR, Clone: 251356B12) (black, dashed) and PE-Conjugated Goat Anti-Rabbit IgG(H+L). Cells



Biolayer interferometry (BLI) kinetic assays of 98621-2-RR against Human IL12RB2 were performed. The affinity constant is 33.7 pM.