

For Research Use Only

# Anti-Human LILRA2/CD85h Rabbit Recombinant Antibody, PBS Only

Catalog Number: 98607-1-PBS



## Basic Information

Catalog Number:

98607-1-PBS

Concentration:

1mg, 3 mg/ml

Source:

Rabbit

Isotype:

IgG

Immunogen Catalog Number:

EG1746

GenBank Accession Number:

NM\_001130917.3

GeneID (NCBI):

11027

UNIPROT ID:

Q8N149-1

Full Name:

Leukocyte immunoglobulin-like receptor, subfamily A (with TM domain), member 2

Calculated MW:

53kDa

Purification Method:

Protein A purification

CloneNo.:

250334G1

## Applications

Tested Applications:

FC

Species Specificity:

human

## Background Information

LILRA2 (Leukocyte Immunoglobulin-Like Receptor A2) is a specialized cell surface receptor primarily expressed on innate immune cells. It functions as a sensor for specific microbial products and plays a complex role in regulating immune responses. LILRA2 selectively modulates LPS-mediated responses in monocytes, enhancing production of specific pro-inflammatory cytokines while inhibiting phagocytosis (PMID 22479404).

## Storage

Storage:

Store at -80°C.

**The product is shipped with ice packs. Upon receipt, store it immediately at -80°C**

Storage Buffer:

PBS only, pH7.3

For technical support and original validation data for this product please contact:

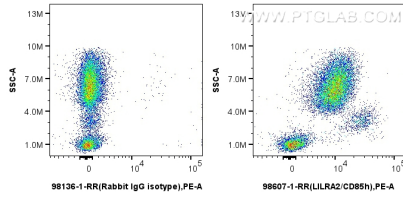
T: 4006900926

E: [Proteintech-CN@ptglab.com](mailto:Proteintech-CN@ptglab.com)

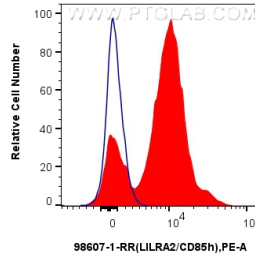
W: [ptgcn.com](http://ptgcn.com)

**This product is exclusively available under Proteintech Group brand and is not available to purchase from any other manufacturer.**

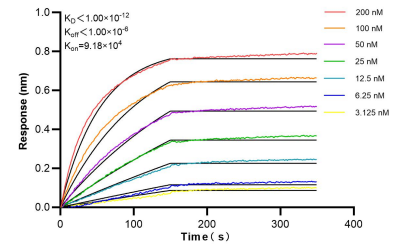
## Selected Validation Data



1x10<sup>6</sup> human peripheral blood leukocytes were surface stained with 0.25 ug Anti-Human LILRA2/CD85h Rabbit RecAb (98607-1-RR, Clone:250334G1) or Rabbit IgG Isotype Control RecAb (98136-1-RR, Clone: 240953C9) and PE-Conjugated Goat Anti-Rabbit IgG(H+L). Cells were incubated with FC Receptor Block prior to staining. Cells were not fixed. This data was developed using the same antibody clone with 98607-1-PBS in a different storage buffer formulation.



1x10<sup>6</sup> human peripheral blood leukocytes were surface stained with 0.25 ug Anti-Human LILRA2/CD85h Rabbit RecAb (98607-1-RR, Clone:250334G1)(red) or Rabbit IgG Isotype Control RecAb (98136-1-RR, Clone: 240953C9) (blue) and PE-Conjugated Goat Anti-Rabbit IgG(H+L). Cells were incubated with FC Receptor Block prior to staining. Cells were not fixed. This data was developed using the same antibody clone with 98607-1-PBS in a different storage buffer formulation.



Bi-layer interferometry (BLI) kinetic assays of 98607-1-RR against Human LILRA2/CD85h were performed. The affinity constant is below 1 pM.