

For Research Use Only

# Anti-Human CD32 Rabbit Recombinant Antibody, PBS Only

Catalog Number: 98601-2-PBS



## Basic Information

<b>Catalog Number:</b> 98601-2-PBS	<b>GenBank Accession Number:</b> NM_001136219.3	<b>Purification Method:</b> Protein A purification
<b>Concentration:</b> 1mg, 3 mg/ml	<b>GeneID (NCBI):</b> 2212	<b>CloneNo.:</b> 251087D9
<b>Source:</b> Rabbit	<b>UNIPROT ID:</b> P12318-1	
<b>Isotype:</b> IgG	<b>Full Name:</b> Fc fragment of IgG, low affinity IIa, receptor (CD32)	
<b>Immunogen Catalog Number:</b> EG2713	<b>Calculated MW:</b> 35 kDa	

## Applications

**Tested Applications:**  
FC

**Species Specificity:**  
human

## Background Information

CD32 (Fc $\gamma$ RII) is a 40 kD transmembrane glycoprotein that binds to the Fc region of IgG with low affinity. CD32 is present on phagocytic cells such as macrophages and neutrophils, and is involved in the process of phagocytosis and clearing of immune complexes.

## Storage

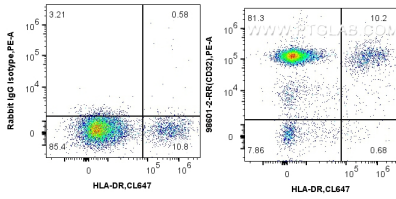
**Storage:**  
Store at -80°C.  
**The product is shipped with ice packs. Upon receipt, store it immediately at -80°C**

**Storage Buffer:**  
PBS only, pH7.3

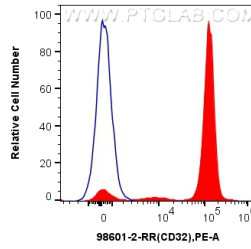
For technical support and original validation data for this product please contact:  
T: 4006900926      E: Proteintech-CN@ptglab.com      W: ptgcn.com

**This product is exclusively available under Proteintech Group brand and is not available to purchase from any other manufacturer.**

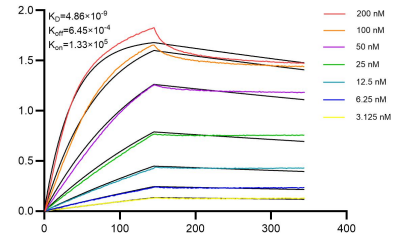
## Selected Validation Data



1x10<sup>6</sup> human peripheral blood lymphocytes were surface stained with 0.25 ug Anti-Human CD32 Rabbit RecAb (98601-2-RR, Clone: 251087D9) or 0.25 ug Rabbit IgG Isotype Control RecAb (98136-1-RR, Clone: 240953C9), and PE-Conjugated Goat Anti-Rabbit IgG(H+L). Cells were then stained with CoraLite® Plus 647 Anti-Human HLA-DR. Cells were incubated with FC Receptor Block prior to staining. Cells were not fixed. This data was developed using the same antibody clone



1x10<sup>6</sup> human peripheral blood lymphocytes were surface stained with 0.25 ug Anti-Human CD32 Rabbit RecAb (98601-2-RR, Clone: 251087D9) (red) or Rabbit IgG Isotype Control RecAb (98136-1-RR, Clone: 240953C9) (blue), and PE-Conjugated Goat Anti-Rabbit IgG(H+L). Cells were incubated with FC Receptor Block prior to staining. Cells were not fixed. This data was developed using the same antibody clone with 98601-2-PBS in a different storage buffer formulation.



Bi-layer interferometry (BLI) kinetic assays of 98601-2-RR against Human CD32 were performed. The affinity constant is 4.86 nM.