

For Research Use Only

# Anti-Biotin Rabbit Recombinant Antibody, PBS Only

Catalog Number: 98598-1-PBS



## Basic Information

Catalog Number:

98598-1-PBS

Concentration:

1mg, 3 mg/ml

Source:

Rabbit

Isotype:

IgG

GenBank Accession Number:

GeneID (NCBI):

Full Name:

Purification Method:

Protein A purification

CloneNo.:

242355B1

## Applications

Tested Applications:

FC

Species Specificity:

n/a

## Background Information

Biotin, also called vitamin H or vitamin B7, is a water-soluble vitamin required by all organisms (PMID: 12055344). It serves as a necessary cofactor for enzymes involved in carboxylation reactions essential for gluconeogenesis, lipid metabolism, and amino acid catabolism (PMID: 38825069). Biotin is often used to label proteins and nucleic acids. This anti-biotin antibody can be used for detecting biotinylated molecules.

## Storage

Storage:

Store at -80°C.

The product is shipped with ice packs. Upon receipt, store it immediately at -80°C

Storage Buffer:

PBS only, pH7.3

For technical support and original validation data for this product please contact:

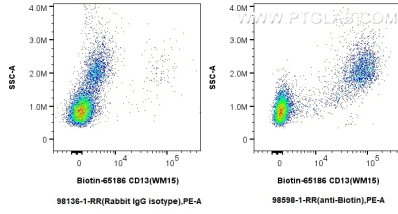
T: 4006900926

E: [Proteintech-CN@ptglab.com](mailto:Proteintech-CN@ptglab.com)

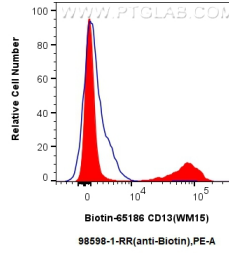
W: [ptgcn.com](http://ptgcn.com)

This product is exclusively available under Proteintech Group brand and is not available to purchase from any other manufacturer.

## Selected Validation Data



1x10<sup>6</sup> human PBMCs were surface stained with Biotin Anti-Human CD13 (WM15) (Biotin-65186, Clone: WM15), and then stained with 0.25 ug Anti-Biotin Rabbit RecAb (98598-1-RR, Clone: 242355B1) or Rabbit IgG Isotype Control RecAb (98136-1-RR, Clone: 240953C9), and PE-conjugated Goat Anti-Rabbit IgG. Cells were incubated with FC Receptor Block prior to staining. Cells were not fixed. This data was developed using the same antibody clone with 98598-1-PBS in a different storage buffer



1x10<sup>6</sup> human PBMCs were surface stained with Biotin Anti-Human CD13 (WM15) (Biotin-65186, Clone: WM15) and then stained with 0.25 ug Anti-Biotin Rabbit RecAb (98598-1-RR, Clone:242355B1) (red) or Rabbit IgG Isotype Control RecAb (98136-1-RR, Clone: 240953C9) (blue) and PE-conjugated Goat Anti-Rabbit IgG. Cells were incubated with FC Receptor Block prior to staining. Cells were not fixed. This data was developed using the same antibody clone with 98598-1-PBS in a