

For Research Use Only

# Anti-Mouse IGSF2/CD101 Rabbit Recombinant Antibody, PBS Only

Catalog Number: 98596-2-PBS



## Basic Information

<b>Catalog Number:</b> 98596-2-PBS	<b>GenBank Accession Number:</b> NM_001167906.1	<b>Purification Method:</b> Protein A purification
<b>Concentration:</b> 1mg, 3 mg/ml	<b>GeneID (NCBI):</b> 630146	<b>CloneNo.:</b> 250569E6
<b>Source:</b> Rabbit	<b>UNIPROT ID:</b> A8E0Y8	
<b>Isotype:</b> IgG	<b>Full Name:</b> immunoglobulin superfamily, member 2	
<b>Immunogen Catalog Number:</b> EG1832	<b>Calculated MW:</b> 114kDa	

## Applications

**Tested Applications:**  
FC

**Species Specificity:**  
mouse

## Background Information

IGSF2, also known as CD101, is a low abundance protein. Expression of CD101 is found on monocytes, granulocytes and dendritic cells. In addition expression on T lymphocytes is important for cell activation. It plays a role as inhibitor of T-cells proliferation induced by CD3 and inhibits expression of IL2RA on activated T-cells and secretion of IL2.

## Storage

**Storage:**  
Store at -80°C.  
**The product is shipped with ice packs. Upon receipt, store it immediately at -80°C**

**Storage Buffer:**  
PBS only, pH7.3

For technical support and original validation data for this product please contact:

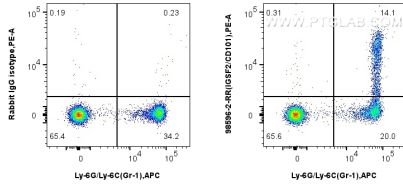
T: 4006900926

E: [Proteintech-CN@ptglab.com](mailto:Proteintech-CN@ptglab.com)

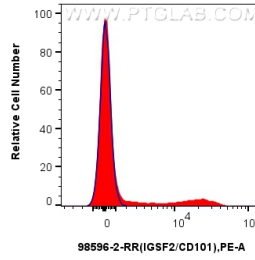
W: [ptgcn.com](http://ptgcn.com)

**This product is exclusively available under Proteintech Group brand and is not available to purchase from any other manufacturer.**

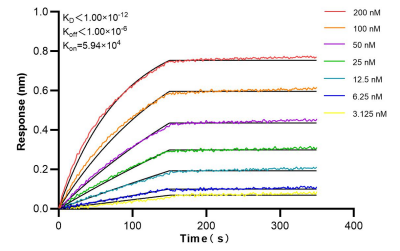
## Selected Validation Data



1x10<sup>6</sup> mouse bone marrow cells were surface stained with 0.25 µg Anti-Mouse IGSF2/CD101 Rabbit RecAb (98596-2-RR, Clone: 250569E6) or 0.25 µg Rabbit IgG Isotype Control RecAb (98136-1-RR, Clone: 240953C9), and PE-Conjugated Goat Anti-Rabbit IgG(H+L), Cells were then stained with APC Anti-Mouse Ly-6G/Ly-6C (Gr-1) (RB6-8C5) (APC-65140, Clone: RB6-8C5). Cells were not fixed. This data was developed using the same antibody clone with 98596-2-PBS in a



1x10<sup>6</sup> mouse bone marrow cells were surface stained with 0.25 µg Anti-Mouse IGSF2/CD101 Rabbit RecAb (98596-2-RR, Clone: 250569E6) (red) or 0.25 µg Rabbit IgG Isotype Control RecAb (98136-1-RR, Clone: 240953C9) (blue), and PE-Conjugated Goat Anti-Rabbit IgG(H+L). Cells were not fixed. This data was developed using the same antibody clone with 98596-2-PBS in a different storage buffer formulation.



Bi-layer interferometry (BLI) kinetic assays of 98596-2-RR against Mouse IGSF2/CD101 were performed. The affinity constant is below 1 pM.