

For Research Use Only

Anti-Human ATP1B3 Rabbit Recombinant Antibody, PBS Only

Catalog Number: 98589-1-PBS



Basic Information

Catalog Number: 98589-1-PBS	GenBank Accession Number: BC011835	Purification Method: Protein A purification
Concentration: 1mg, 3 mg/ml	GeneID (NCBI): 483	CloneNo.: 251377D4
Source: Rabbit	UNIPROT ID: P54709	
Isotype: IgG	Full Name: ATPase, Na ⁺ /K ⁺ transporting, beta 3 polypeptide	
Immunogen Catalog Number: EG4947	Calculated MW: 32 kDa	

Applications

Tested Applications:
FC

Species Specificity:
human

Background Information

ATP1B3 (also known as CD298) is the β 3 subunit of Na⁺/K⁺-ATPase which functions to maintain sodium and potassium gradients across membranes involved in cellular activities. ATP1B3 is a glycosylated protein and there are fully and intermediately glycosylated forms of ATP1B3 in mammalian cells. The predicted MW of ATP1B3 is around 32 kDa, while various forms (38-43 kDa) can be observed due to the different level of glycosylation (PMID: 30792309, 16339171, 17176442).

Storage

Storage:
Store at -80°C.
The product is shipped with ice packs. Upon receipt, store it immediately at -80°C

Storage Buffer:
PBS only, pH7.3

For technical support and original validation data for this product please contact:

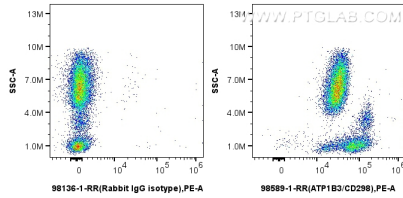
T: 4006900926

E: Proteintech-CN@ptglab.com

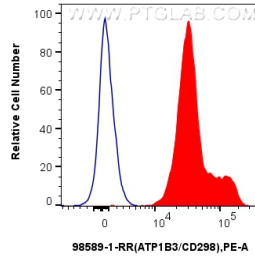
W: ptgcn.com

This product is exclusively available under Proteintech Group brand and is not available to purchase from any other manufacturer.

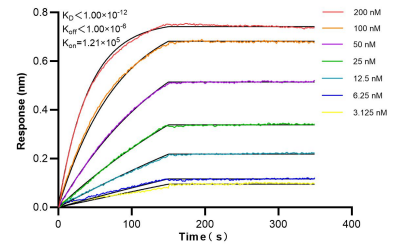
Selected Validation Data



1x10⁶ human peripheral blood leukocytes were surface stained with 0.25 ug Anti-Human ATP1B3 Rabbit RecAb (98589-1-RR, Clone:251377D4) or Rabbit IgG Isotype Control RecAb (98136-1-RR, Clone: 240953C9) and PE-Conjugated Goat Anti-Rabbit IgG(H+L). Cells were incubated with FC Receptor Block prior to staining. Cells were not fixed. This data was developed using the same antibody clone with 98589-1-PBS in a different storage buffer formulation.



1x10⁶ human peripheral blood leukocytes were surface stained with 0.25 ug Anti-Human ATP1B3 Rabbit RecAb (98589-1-RR, Clone:251377D4)(red) or Rabbit IgG Isotype Control RecAb (98136-1-RR, Clone: 240953C9) (blue) and PE-Conjugated Goat Anti-Rabbit IgG(H+L). Cells were incubated with FC Receptor Block prior to staining. Cells were not fixed. This data was developed using the same antibody clone with 98589-1-PBS in a different storage buffer formulation.



Bi-layer interferometry (BLI) kinetic assays of 98589-1-RR against Human ATP1B3 were performed. The affinity constant is below 1 pM.