

For Research Use Only

# Anti-Human GYPC Rabbit Recombinant Antibody

Catalog Number: 98584-1-RR



## Basic Information

Catalog Number:

98584-1-RR

Concentration:

100ug, 1000 µg/ml

Source:

Rabbit

Isotype:

IgG

Immunogen Catalog Number:

EG4905

GenBank Accession Number:

BC104246

GeneID (NCBI):

2995

UNIPROT ID:

P04921

Full Name:

glycophorin C (Gerbich blood group)

Calculated MW:

14 kDa

Purification Method:

Protein A purification

CloneNo.:

251100H6

Recommended Dilutions:

FC: 0.25 ug per 10<sup>6</sup> cells in a 100 µl suspension

## Applications

Tested Applications:

FC

Species Specificity:

human

Positive Controls:

FC : Human peripheral blood erythrocytes,

## Background Information

Glycophorin-C (GYPC) is a minor sialoglycoprotein in human erythrocyte membranes. GYPC interacts with protein 4.1R (EPB41) and plays an important role in regulating the mechanical stability of red cells. GYPC acts as the receptor for the Plasmodium falciparum erythrocyte binding ligand PfEBP-2 (baebl).

## Storage

Storage:

Store at 2 - 8°C. Stable for one year after shipment.

Storage Buffer:

PBS with 0.09% sodium azide, pH7.3

For technical support and original validation data for this product please contact:

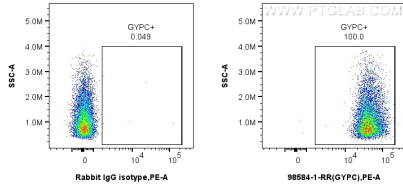
T: 4006900926

E: [Proteintech-CN@ptglab.com](mailto:Proteintech-CN@ptglab.com)

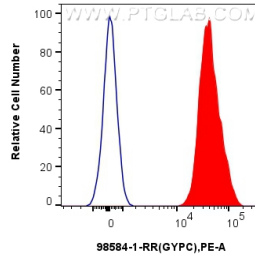
W: [ptgcn.com](http://ptgcn.com)

This product is exclusively available under Proteintech Group brand and is not available to purchase from any other manufacturer.

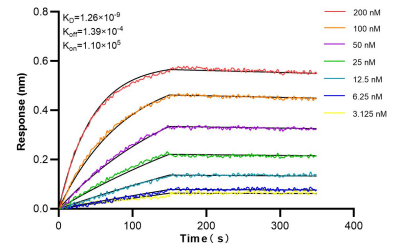
## Selected Validation Data



$1 \times 10^6$  human peripheral blood erythrocytes were surface stained with 0.25  $\mu\text{g}$  Anti-Human GYPC Rabbit RecAb (98584-1-RR, Clone: 251100H6) or 0.25  $\mu\text{g}$  Rabbit IgG Isotype Control RecAb (98136-1-RR, Clone: 240953C9), and PE-Conjugated Goat Anti-Rabbit IgG(H+L). Cells were not fixed.



$1 \times 10^6$  human peripheral blood erythrocytes were surface stained with 0.25  $\mu\text{g}$  Anti-Human GYPC Rabbit RecAb (98584-1-RR, Clone: 251100H6) (red) or 0.25  $\mu\text{g}$  Rabbit IgG Isotype Control RecAb (98136-1-RR, Clone: 240953C9) (blue), and PE-Conjugated Goat Anti-Rabbit IgG(H+L). Cells were not fixed.



Bi-layer interferometry (BLI) kinetic assays of 98584-1-RR against Human GYPC were performed. The affinity constant is 1.26 nM.